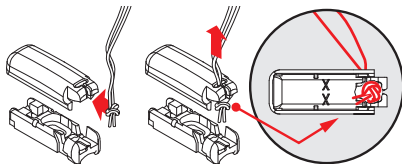


DF 20

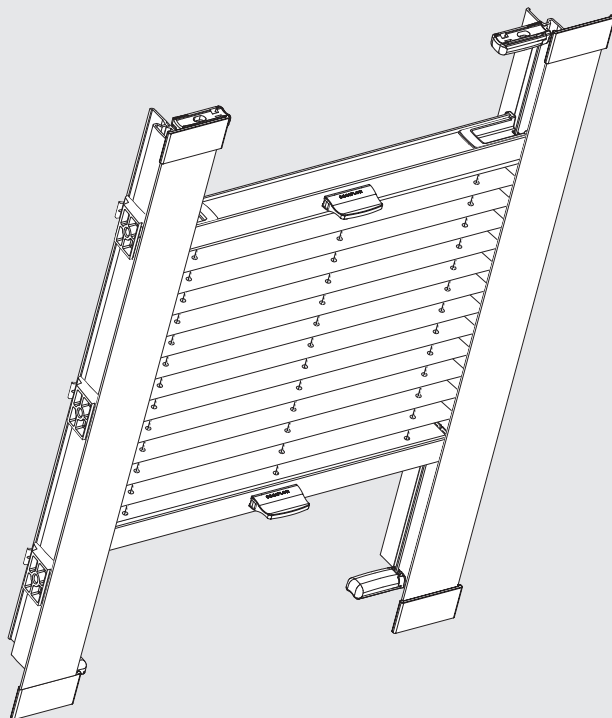


Bitte nur beiliegende Schrauben verwenden.

Please use enclosed screws only.

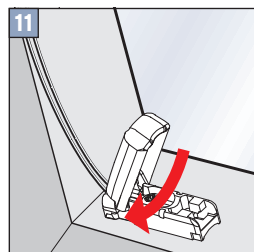
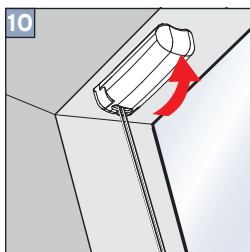
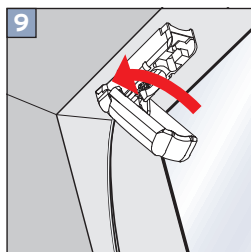
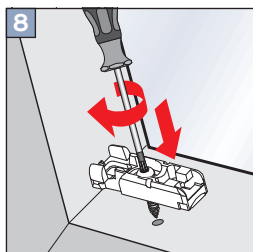
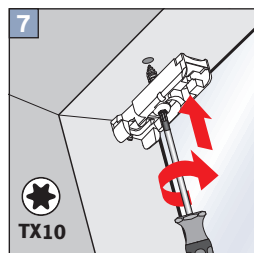
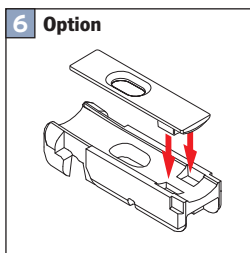
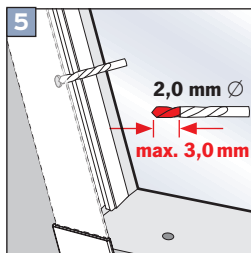
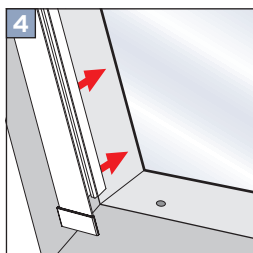
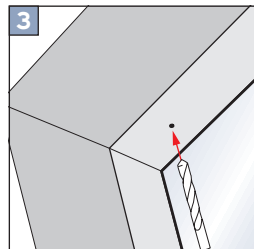
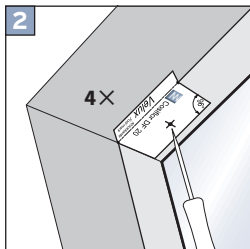
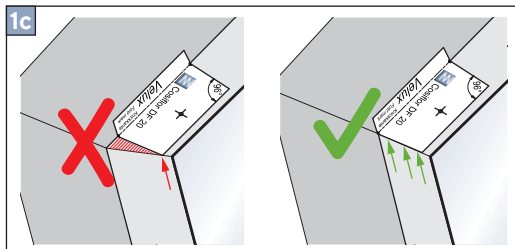
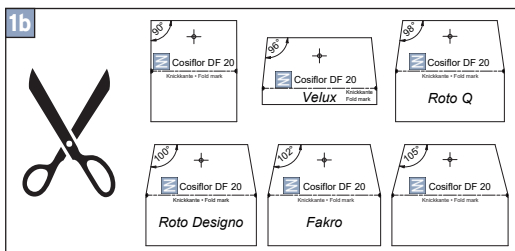
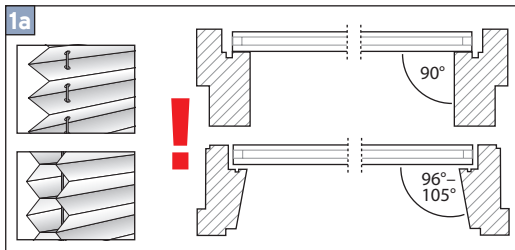
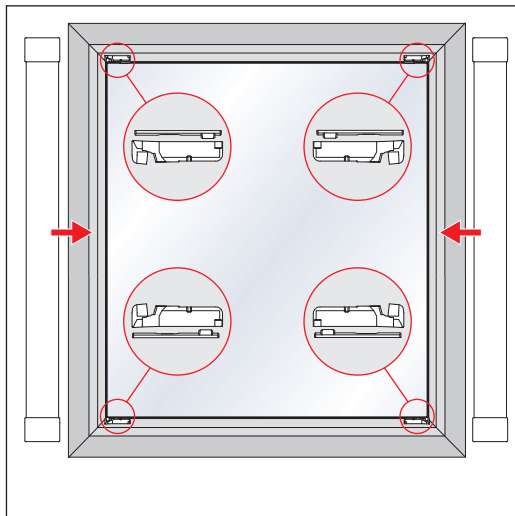
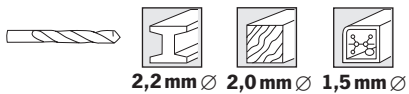
Proszę używać tylko wkrętów załączonych w opakowaniu.

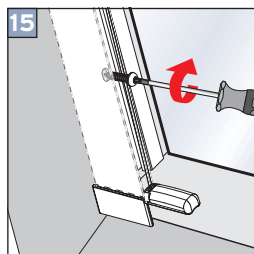
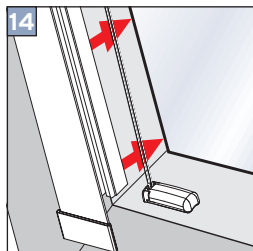
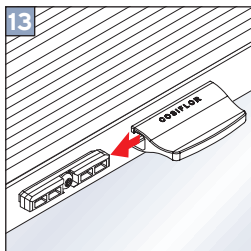
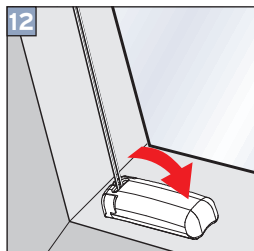
Используйте только шурупы, находящиеся в приложении к упаковке.




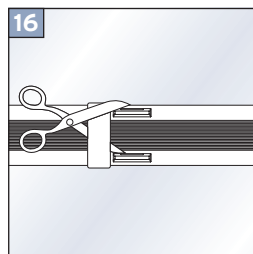
Wichtig! Bitte mit der Pflegeanleitung aufbewahren! • Important! Please keep together with care instructions!
Ważne! Proszę przechowywać z instrukcją pielęgnacji! • Внимание! Хранить вместе с инструкцией по эксплуатации!

Montage
Fitting
Montaj
Монтаж

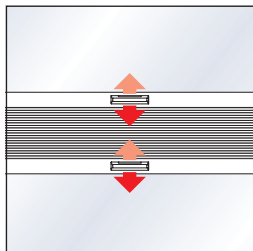




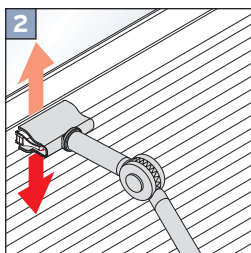
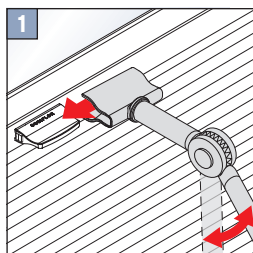
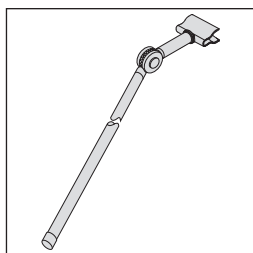

Schrauben nicht überdrehen!
Do not overwind screw!
Proszę przykręcać z właściwą siłą!
Шурупы прикручивать с
приложением соответствующей
силы!



Bedienung • Operation • Obsługa • Управление



Option • Opcja • Вариант



Demontage • Disassembly • Demontaż • Демонтаж

