

VS 2

mit Spannschuhunterteil zum Kleben

Tensioning shoe bottom for gluing

Dolna część buta mocującego do klejenia

с нижней частью башмачка -крепления для приклеивания



max.
2 m²

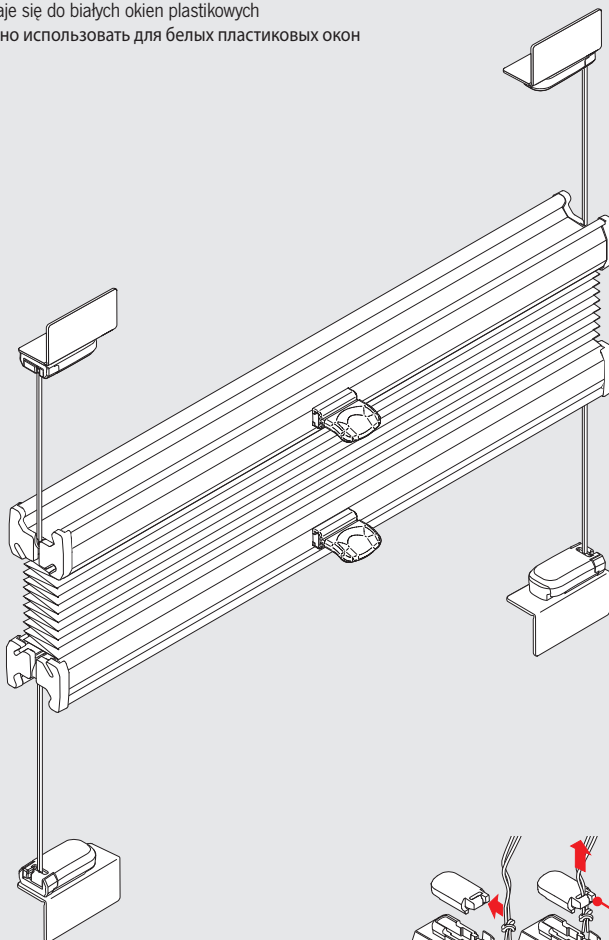
max.
2 kg

Verwendbar für weiße Kunststofffenster

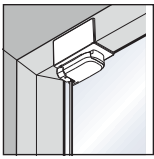
Suitable for white plastic windows

Nadaje się do białych okien plastikowych

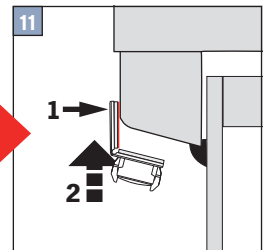
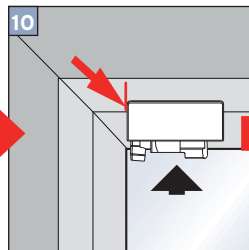
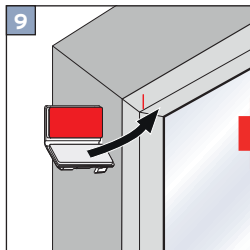
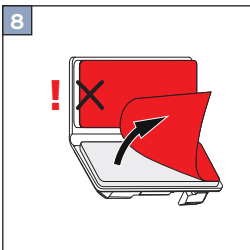
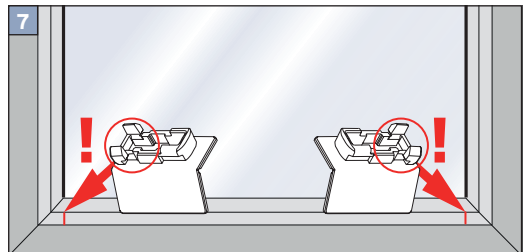
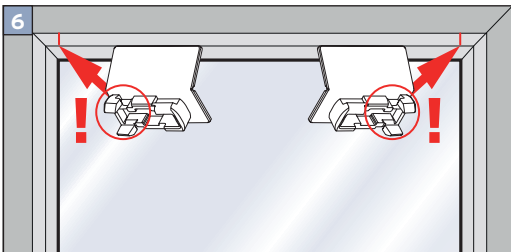
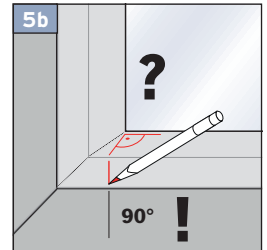
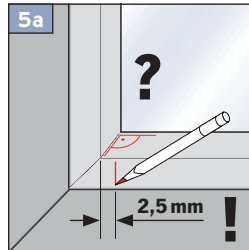
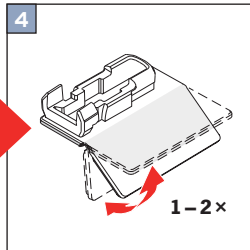
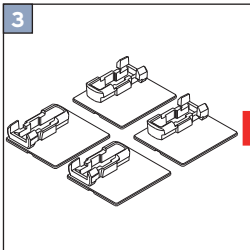
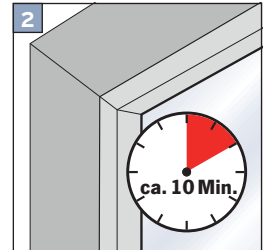
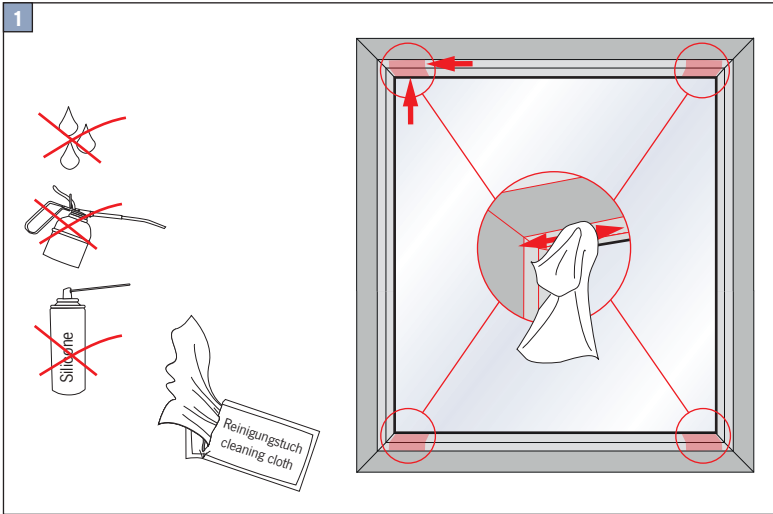
можно использовать для белых пластиковых окон

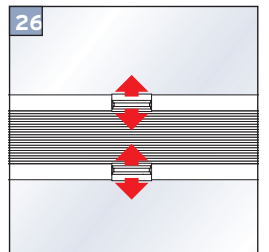
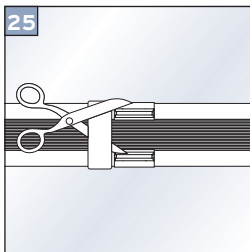
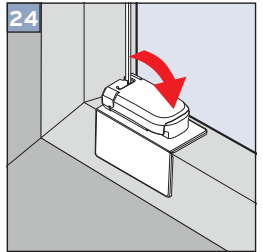
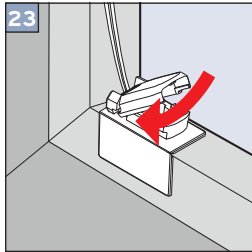
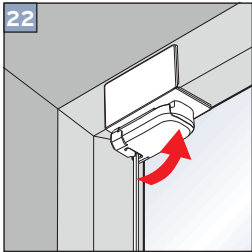
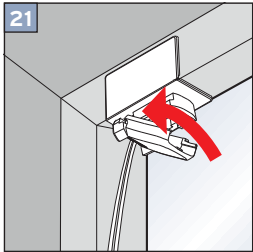
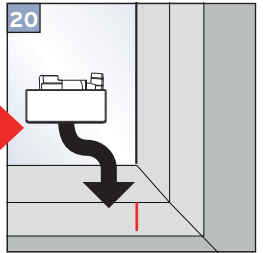
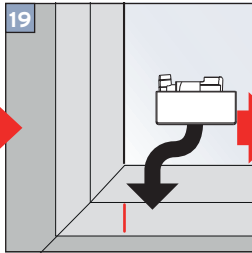
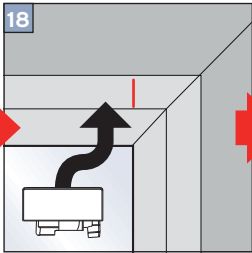
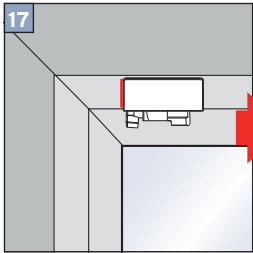
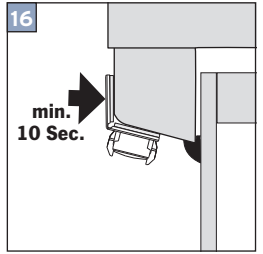
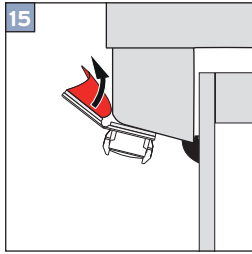
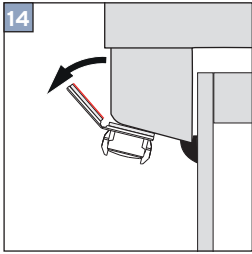
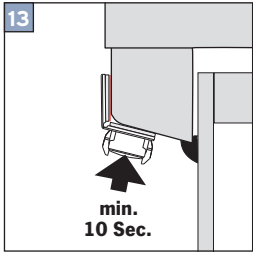


Wichtig! Bitte mit der Pflegeanleitung aufbewahren! • Important! Please keep together with care instructions!
Ważne! Proszę przechowywać z instrukcją pielęgnacji! • Внимание! Хранить вместе с инструкцией по эксплуатации!

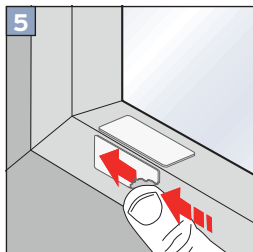
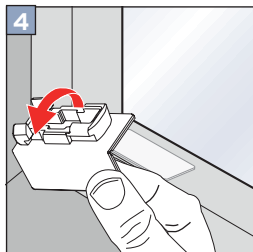
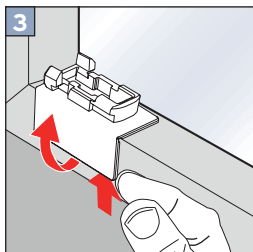
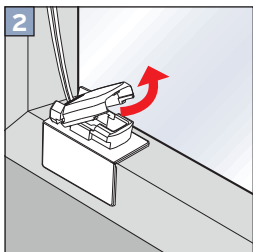
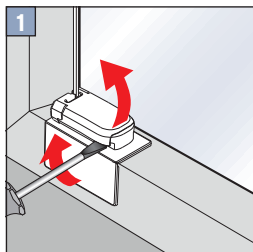


Falzmontage
Top fixing
Montaż w świetle szyby
Монтаж в проем





Demontage • Disassembly • Demontaž • Демонтаж



Option • Опција • Вариант

