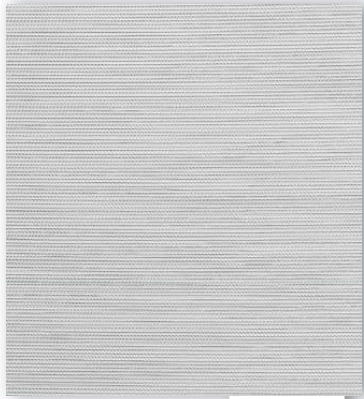


roller

transparent



T204



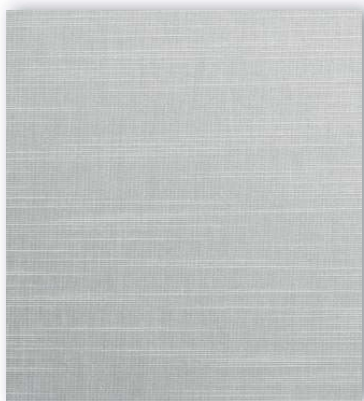
T099



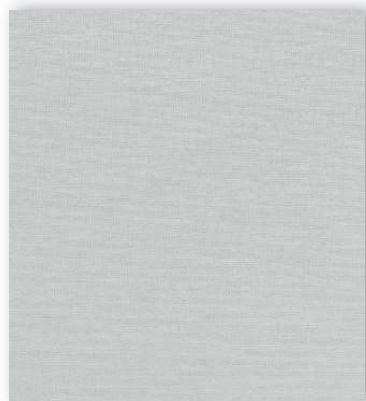
T022



T163



T141



A319



T241



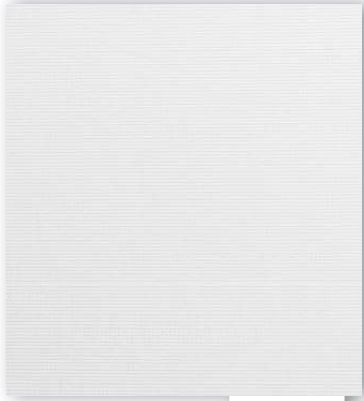
T083



T218



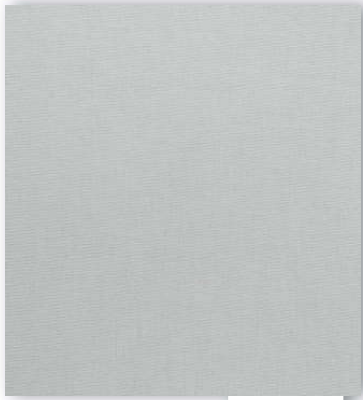
T148



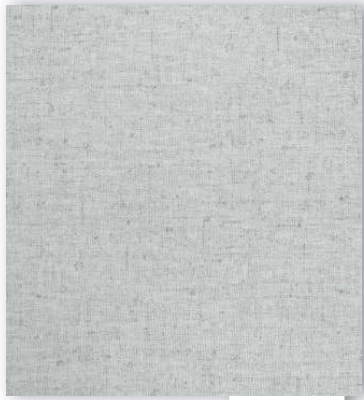
T176



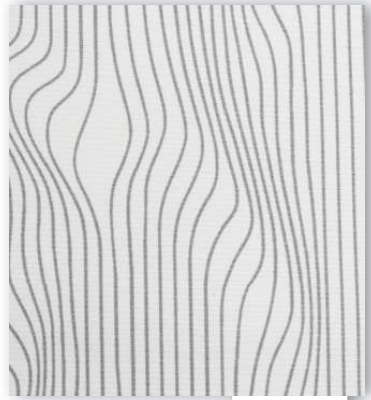
T094



A604



T096

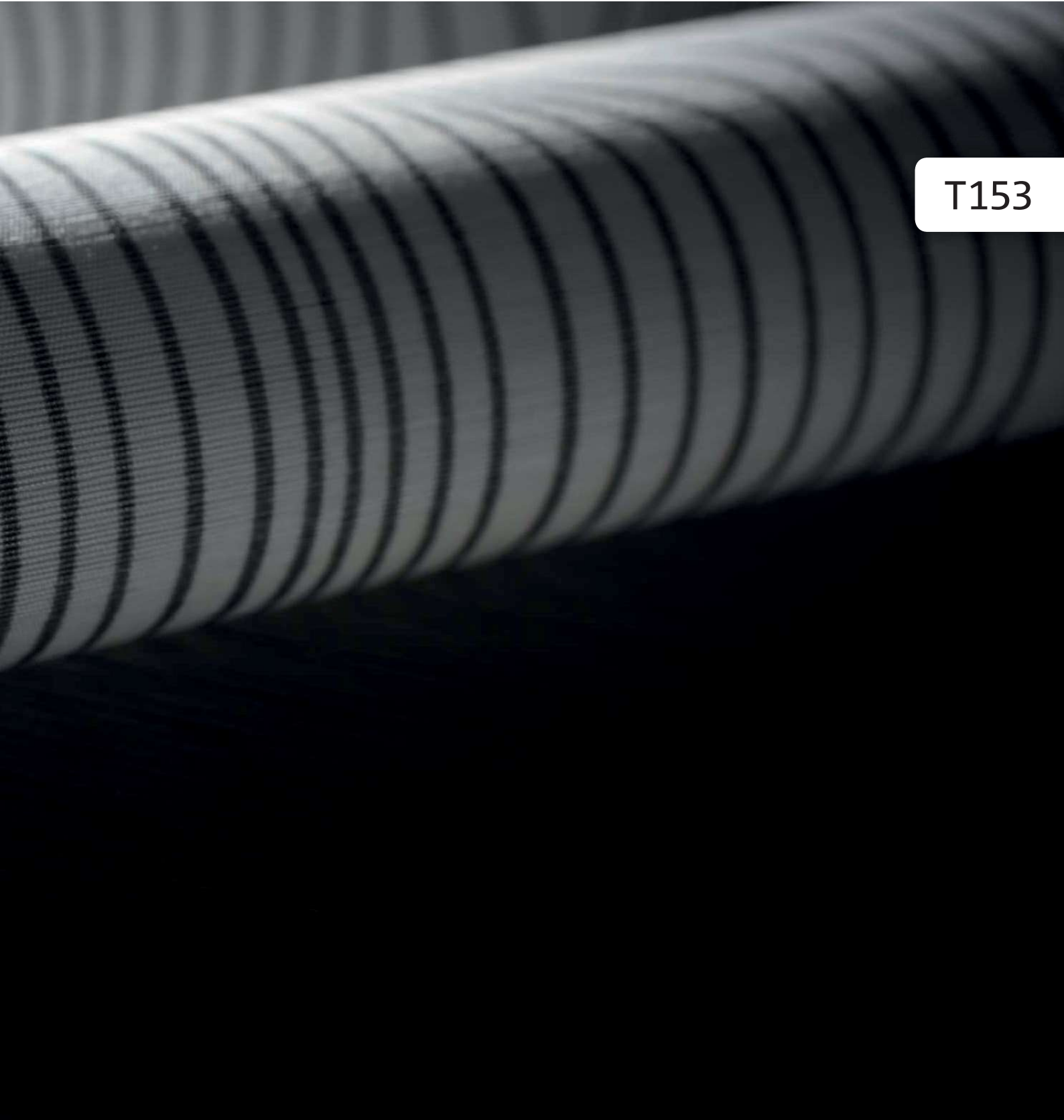


T153

transparent



T217

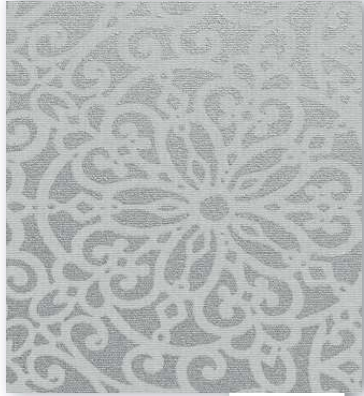


T153

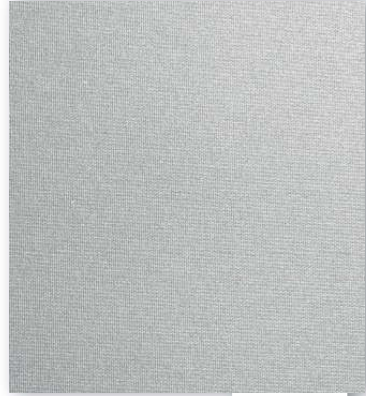
transparent



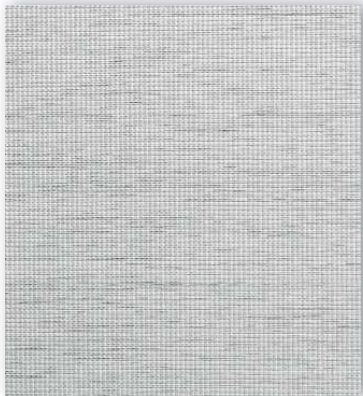
T156



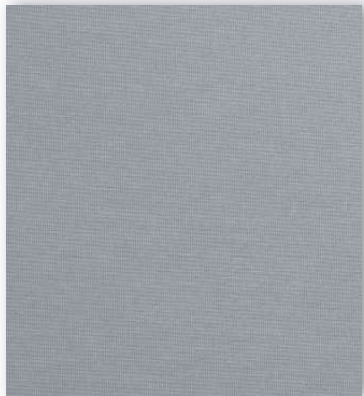
T194



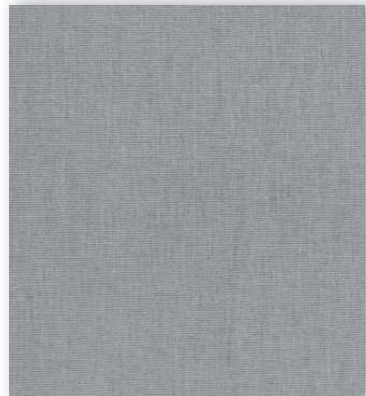
T192



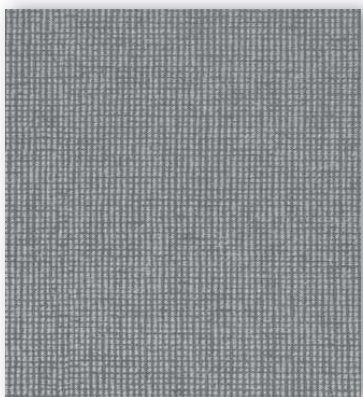
T084



A373



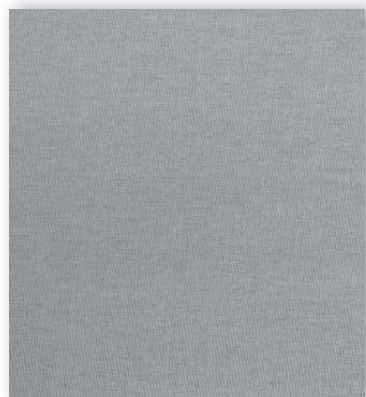
T229



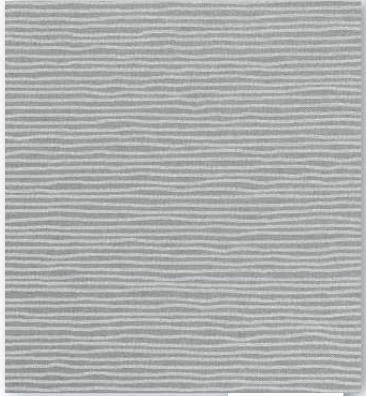
T168



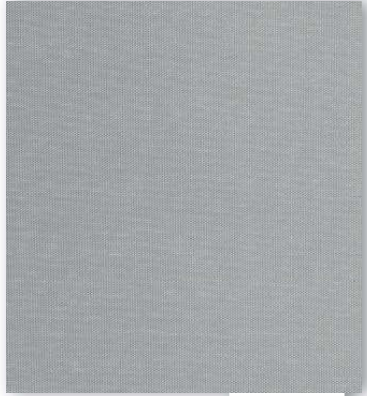
T195



A605



T021



T237



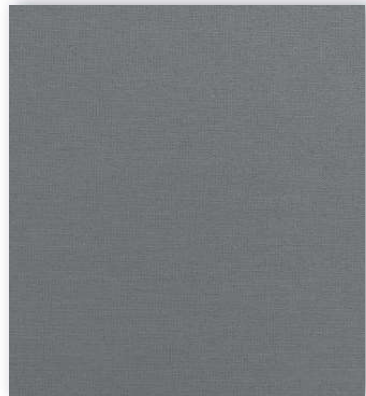
T161



T187



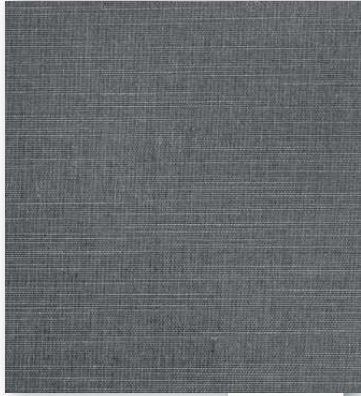
T144



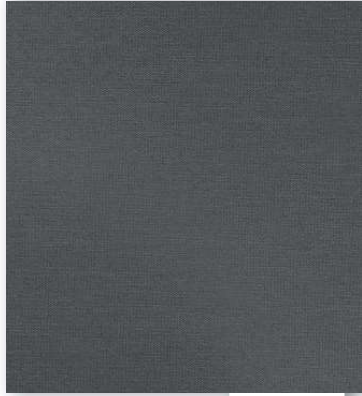
A320

transparent

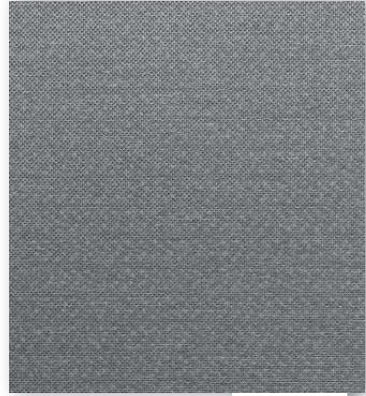
transparent



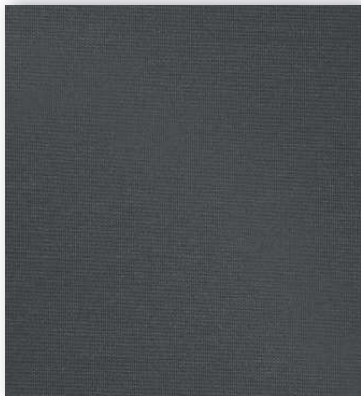
T147



A370



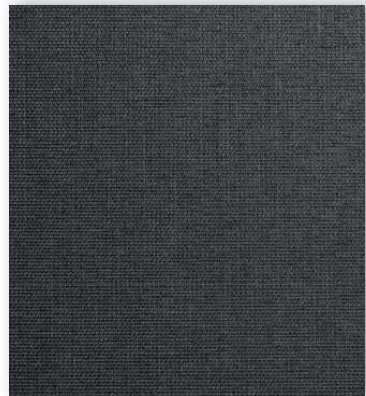
T080



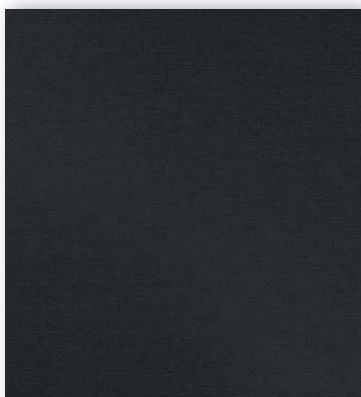
A374



T089



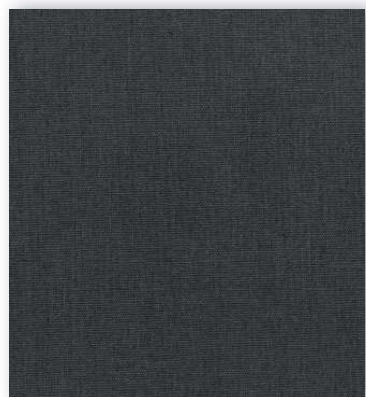
T179



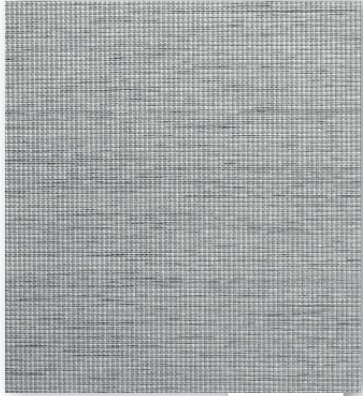
A371



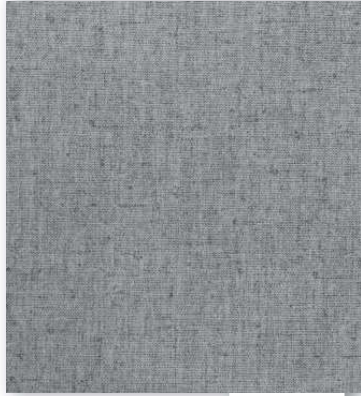
T170



T226



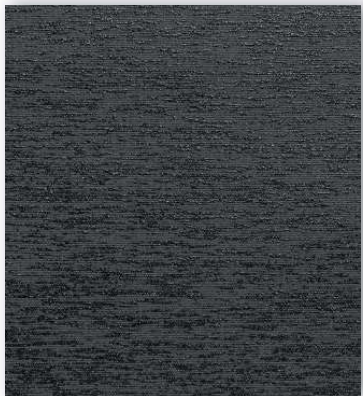
T087



T093



T206



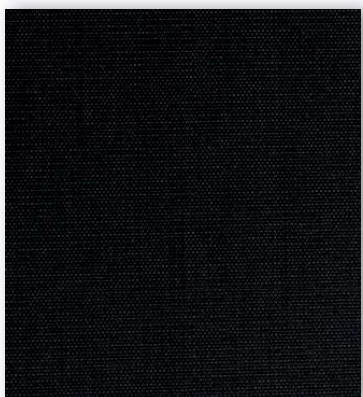
T155



A321



T079



T171

transparent



T155

T084



transparent



T227



T114



T117



T116



T115



T135



T152



T222



A301



T120



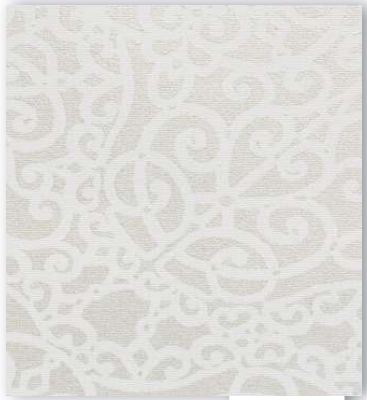
T239



T140



T198



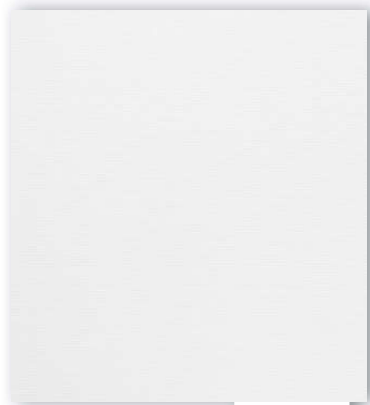
T196

transparent

transparent



T149



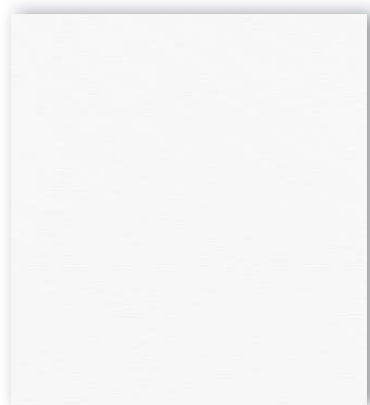
A300



T113



T219



A601



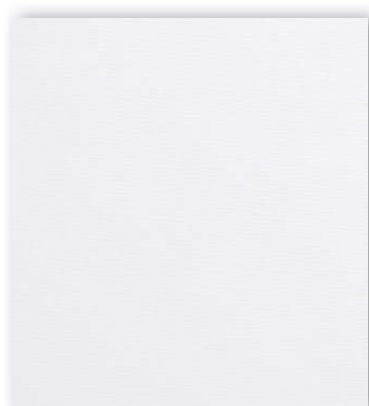
T138



T164



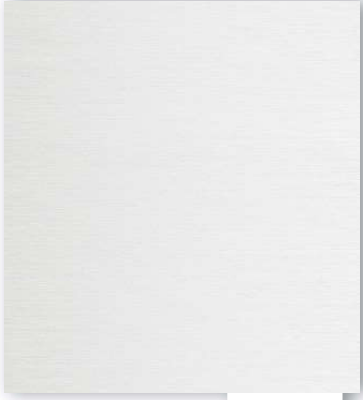
T136



A368



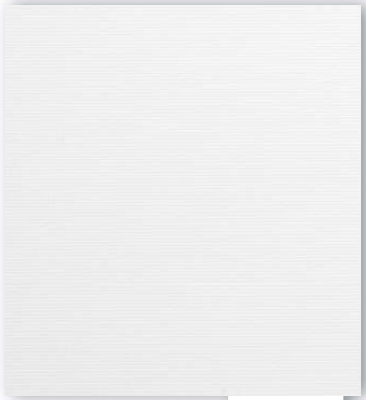
T215



T225



T154



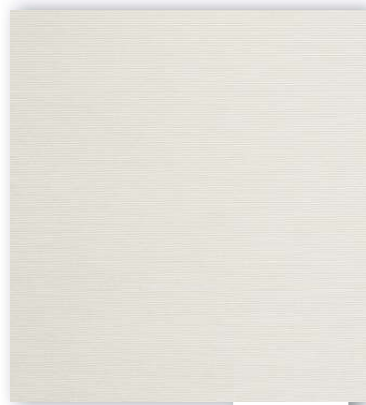
T181



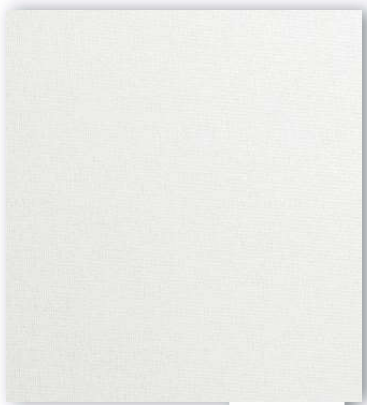
T137

transparent

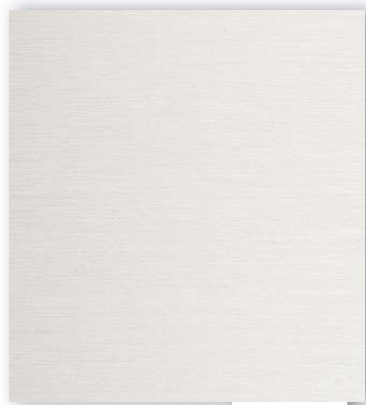
transparent



T207



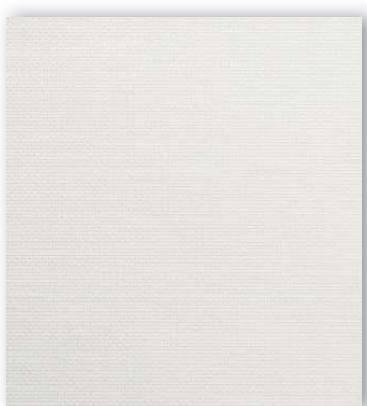
T197



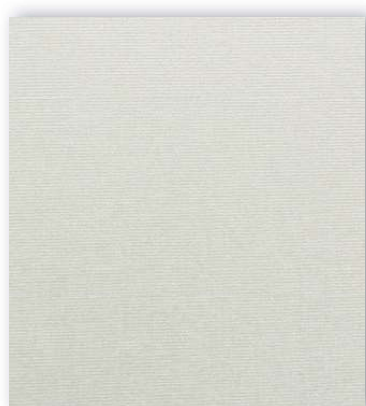
T223



T232



T212



T047



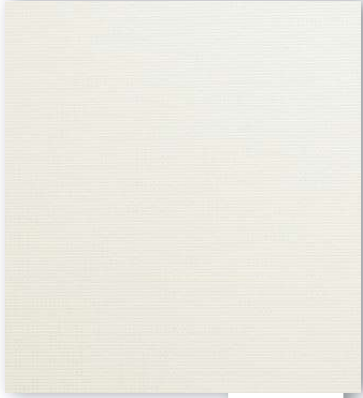
A302



T150



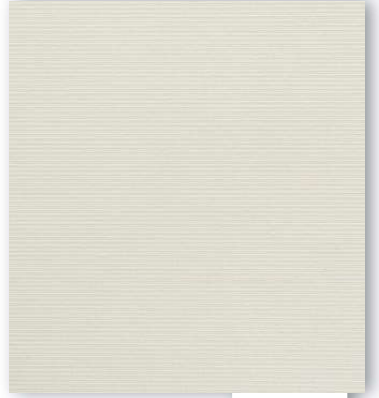
T157



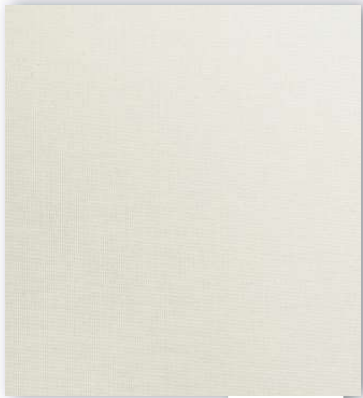
T177



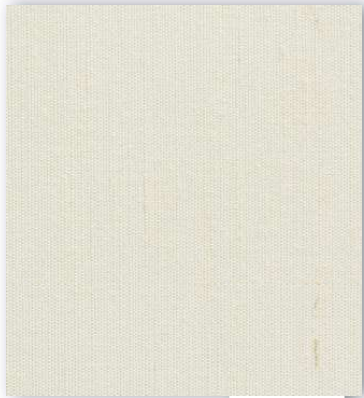
A602



T056



A369



T053



T049

transparent



T150



transparent



T208



T233



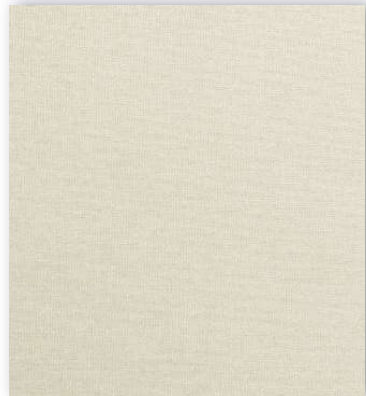
T052



A304



A305



T058



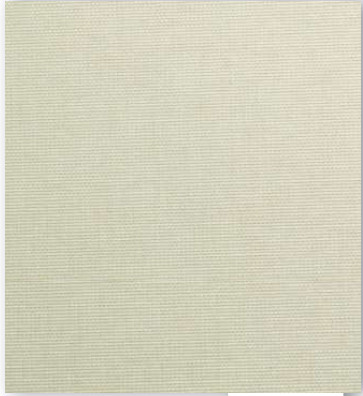
T025



T059



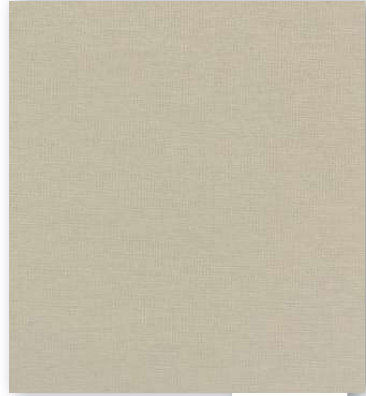
T224



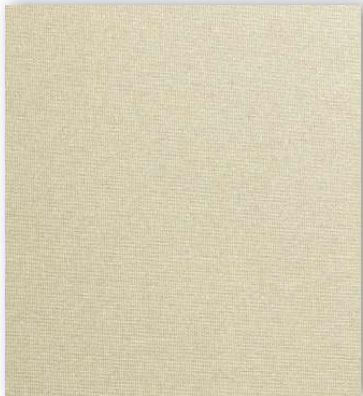
T172



T055



A307



T142



T038



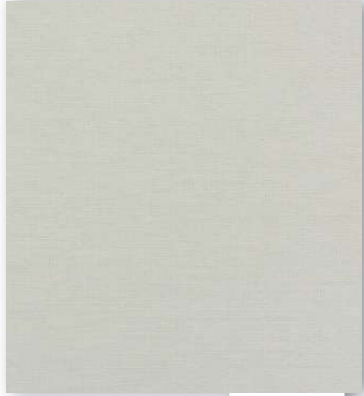
T210

transparent

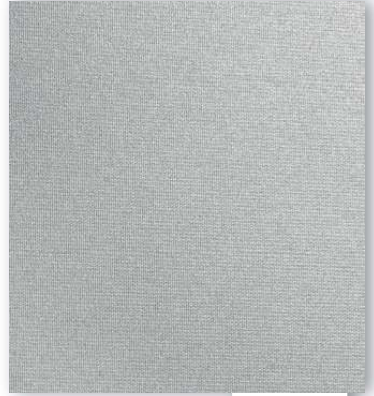
transparent



T030



A318



T024



T062



T216



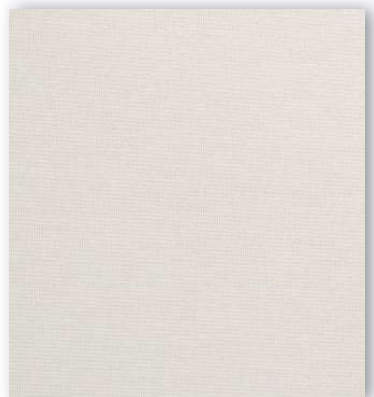
A309



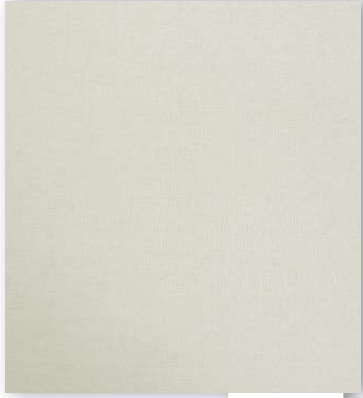
T167



T162



A372



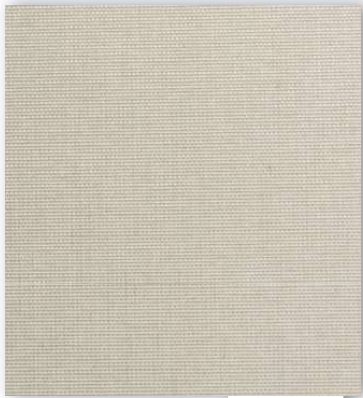
A603



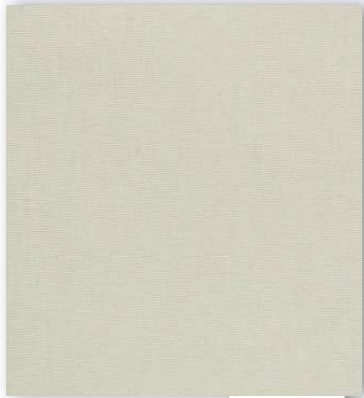
T146



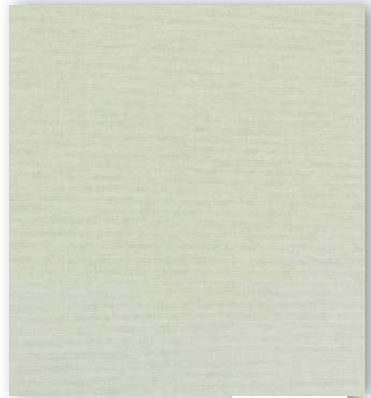
T159



T186



T230

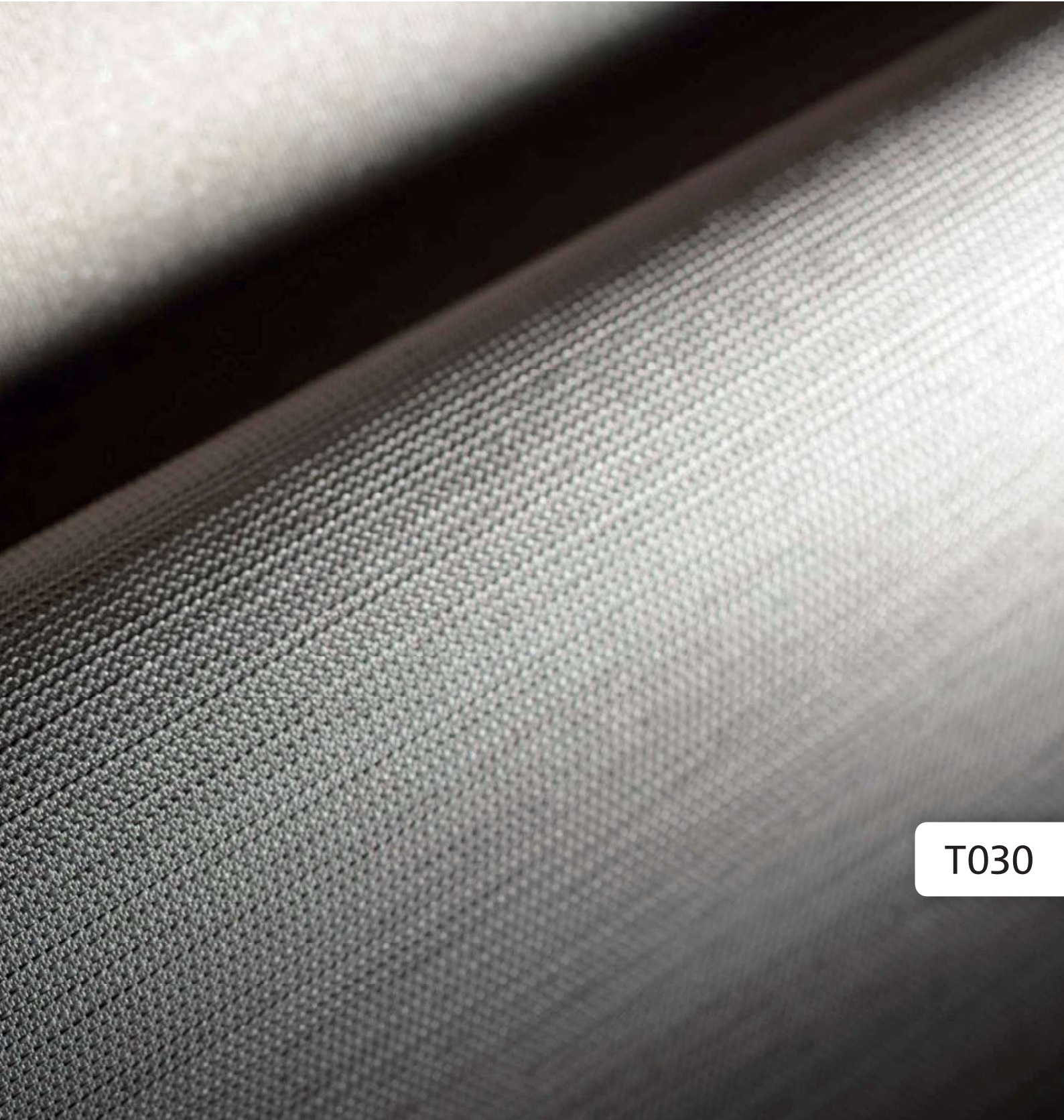


A308

transparent

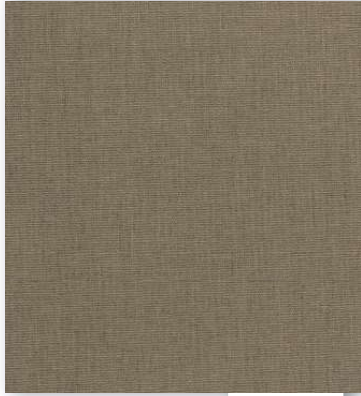


T142



T030

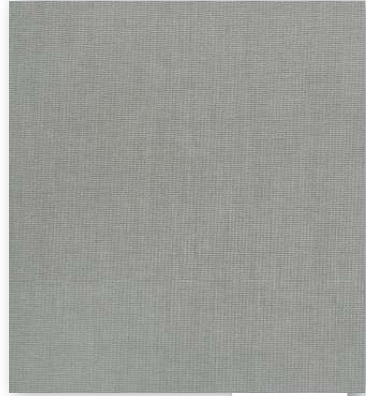
transparent



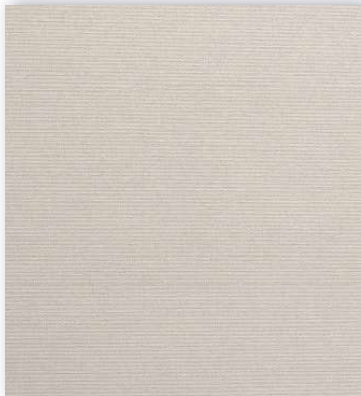
T231



T213



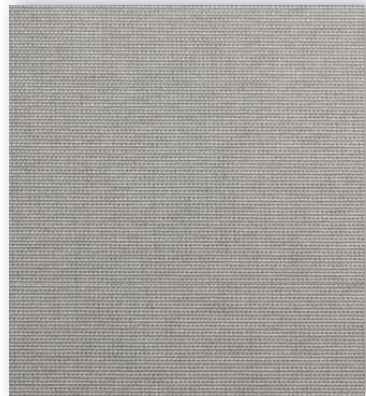
T044



T200



T217



T180



T151



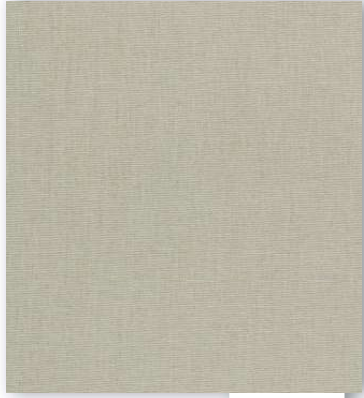
T158



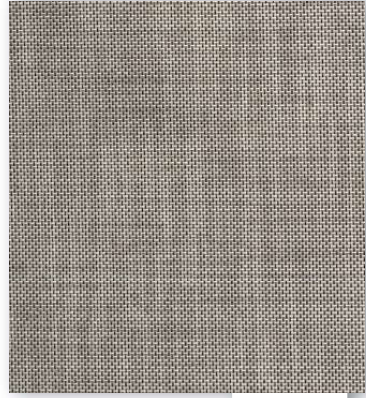
T193



T221



T228



T214



T043



T209

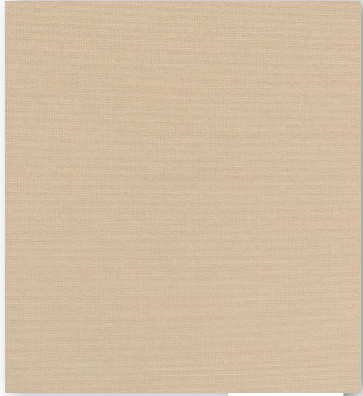
transparent

T193





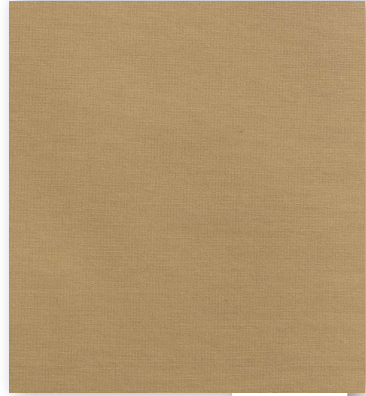
transparent



A306



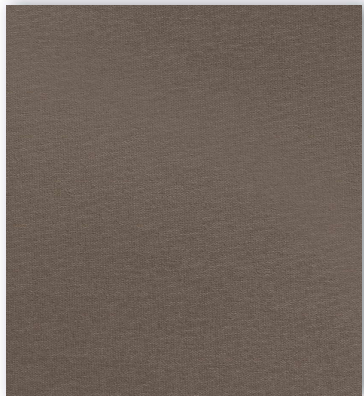
T041



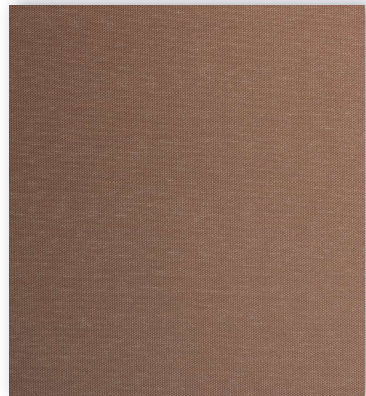
A338



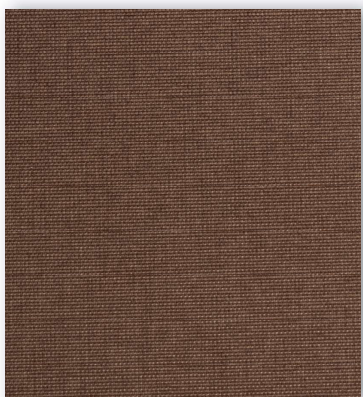
T189



A340



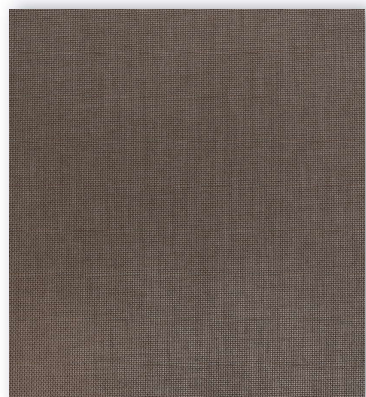
T235



T173



T169



T014



T017



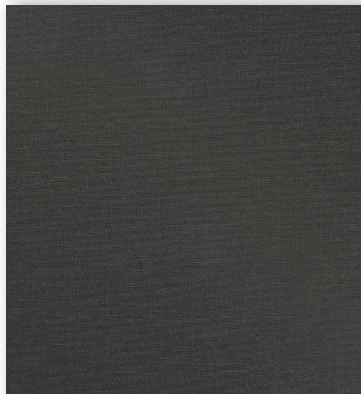
T190



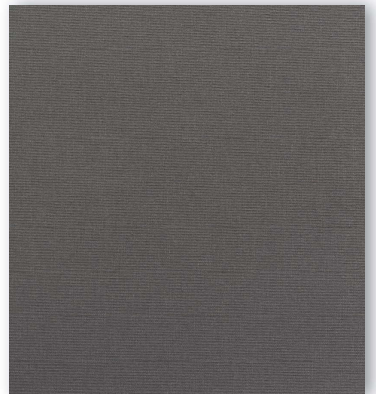
T016



T174



A339



A358

transparent

A close-up photograph of a dark, textured fabric, likely a textile or leather-like material. The fabric features a fine, repeating pattern of small, raised, diamond-shaped or square motifs. The lighting is dramatic, coming from the left, which highlights the texture and creates a gradient from a dark brown/black on the right to a lighter, more detailed view of the pattern on the left. A white label with the text 'T190' is positioned on the left side of the image.

T190

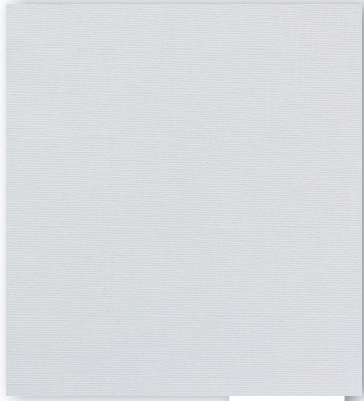


G305

transparent



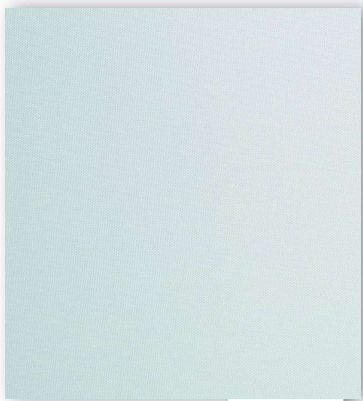
T009



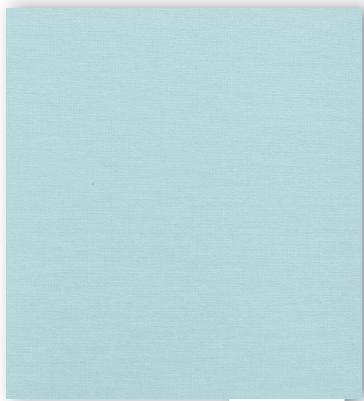
A354



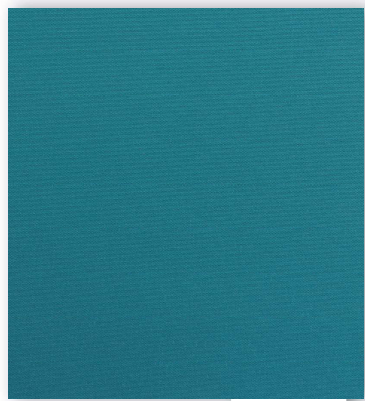
A355



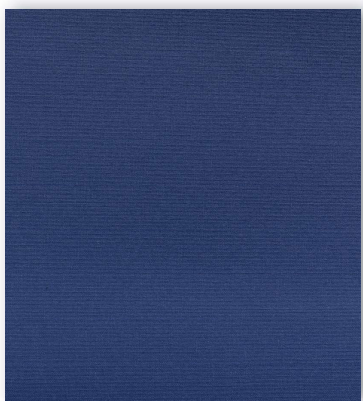
T234



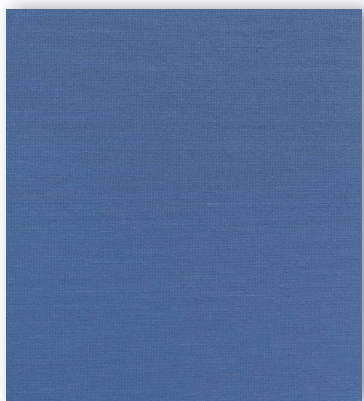
A310



A362



A314



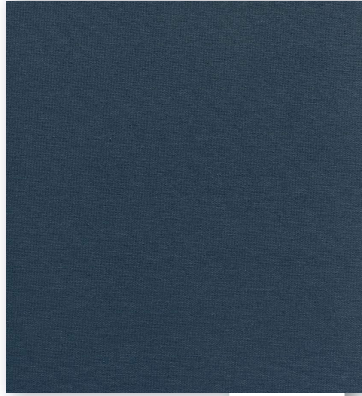
A313



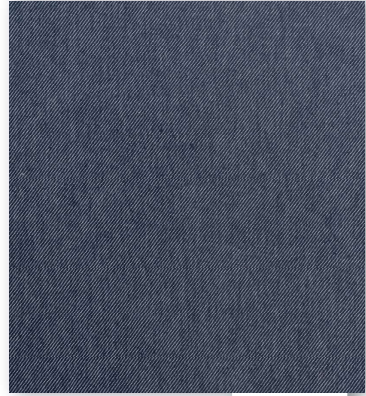
T139



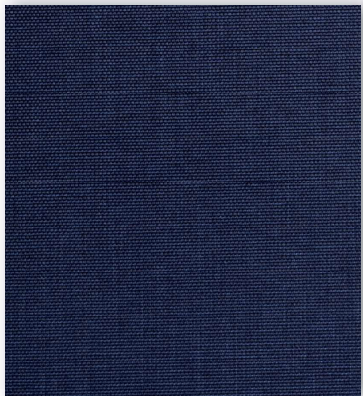
T199



A315



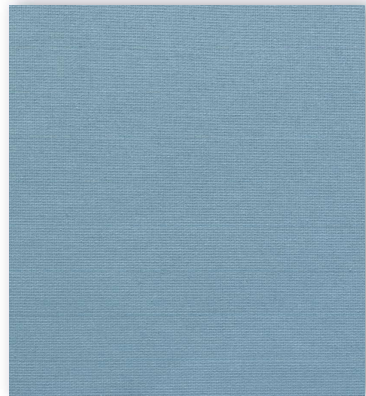
T007



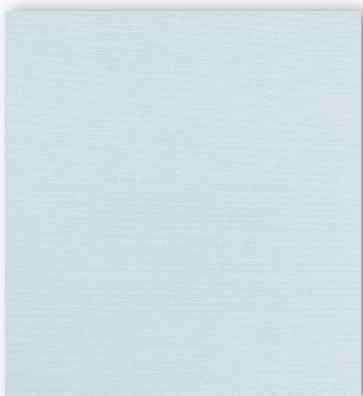
T178



A311



A312

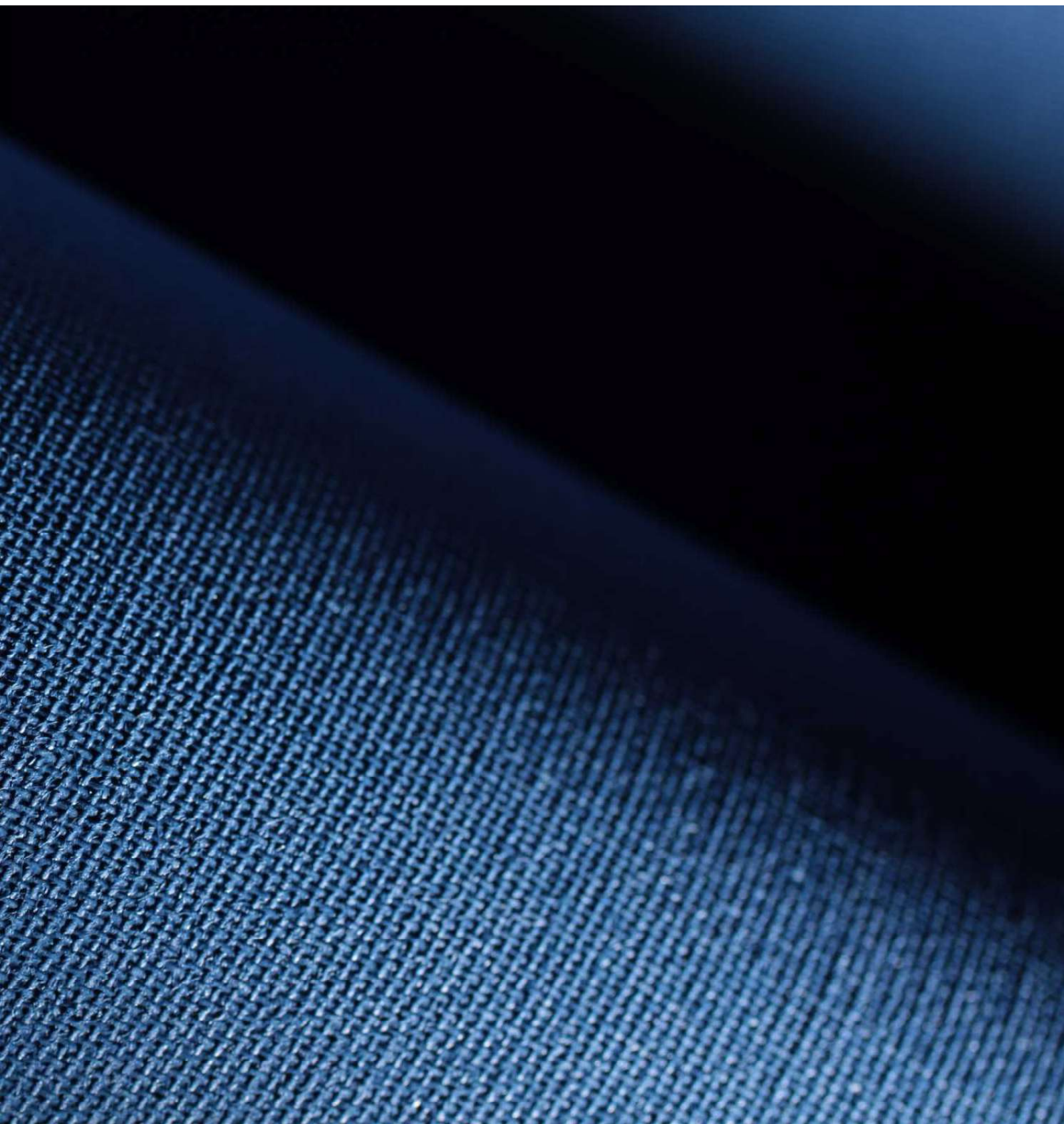


T202

transparent

A313

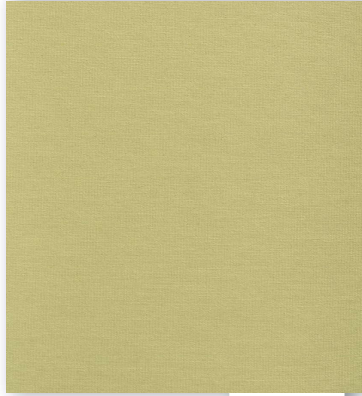




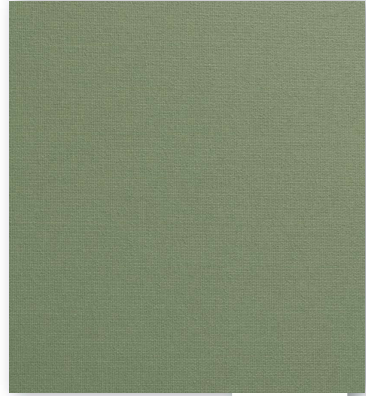
transparent



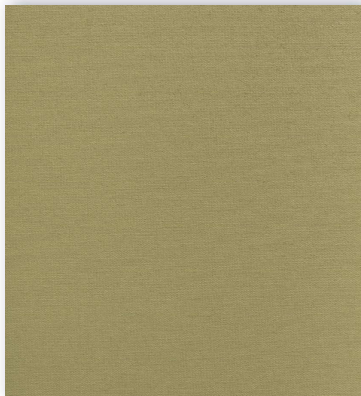
A329



A330



A375



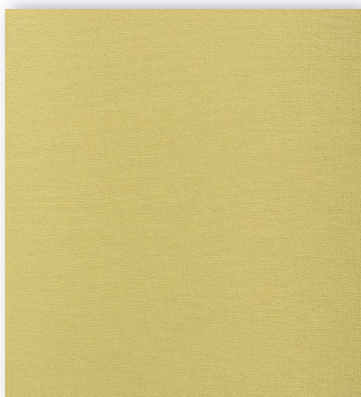
A332



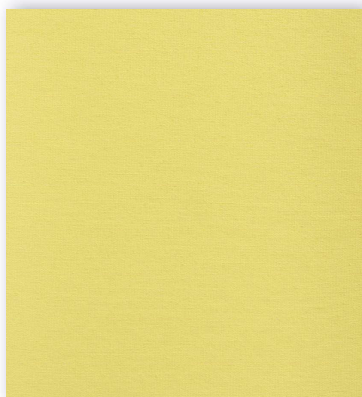
T182



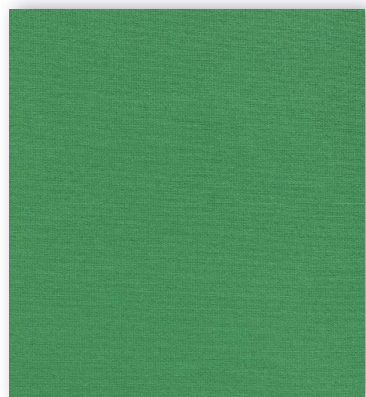
T165



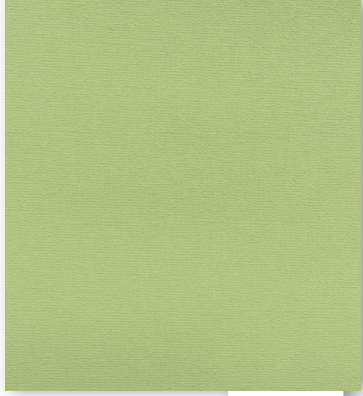
A331



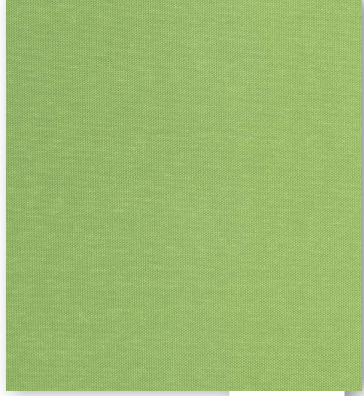
A360



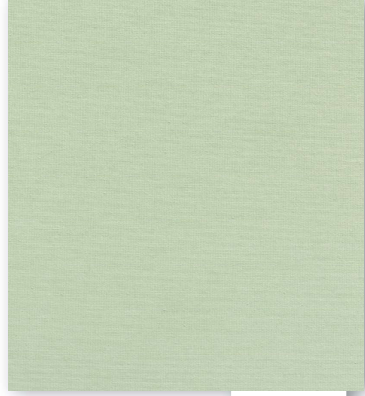
A359



A328



T236



A327

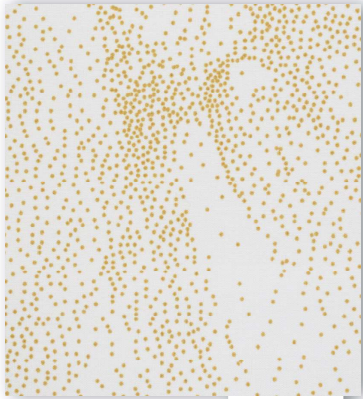
transparent



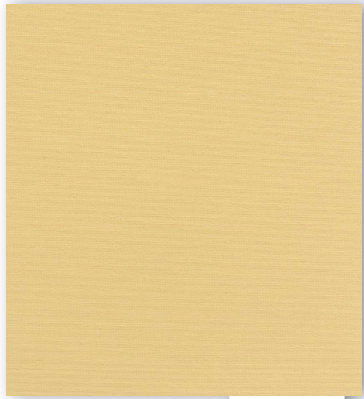
T165



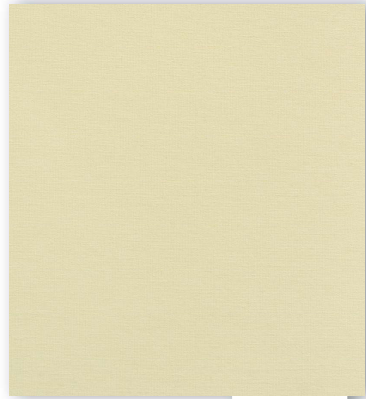
transparent



T220



A334



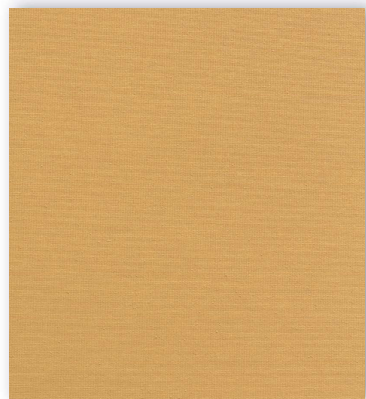
A333



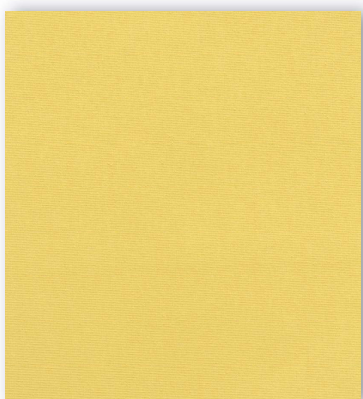
A303



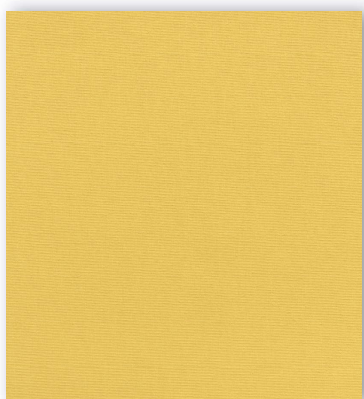
T203



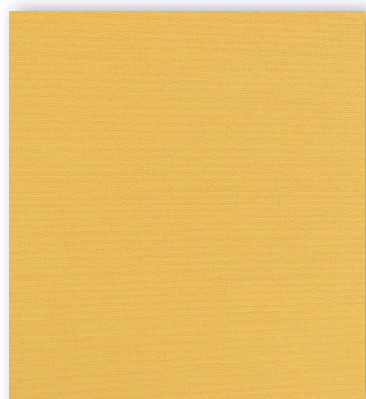
A337



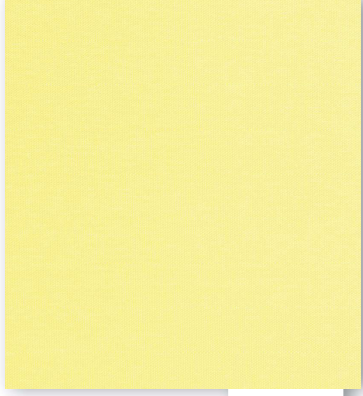
A335



A361



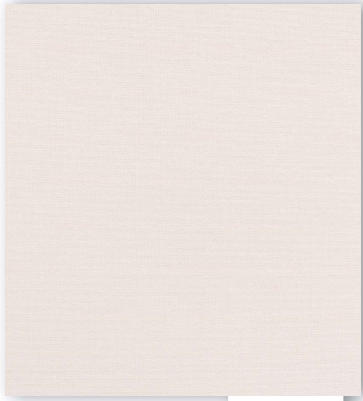
A336



T240

transparent

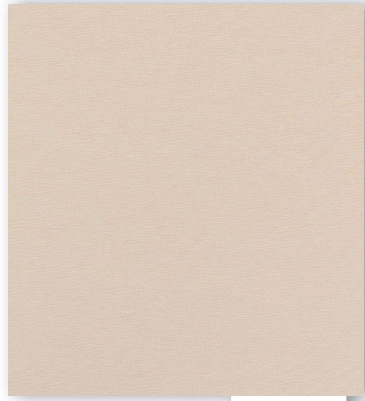
transparent



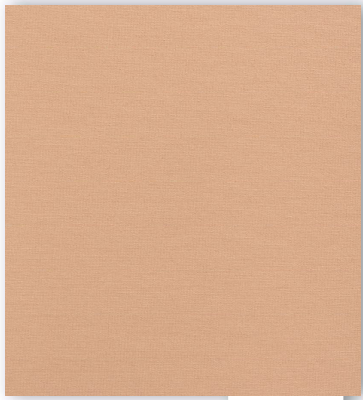
T201



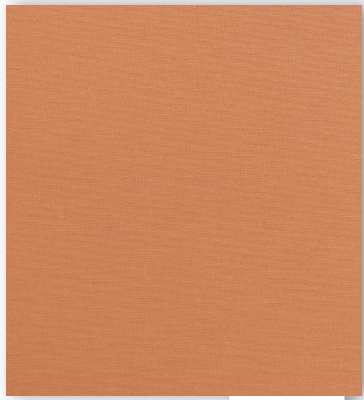
T032



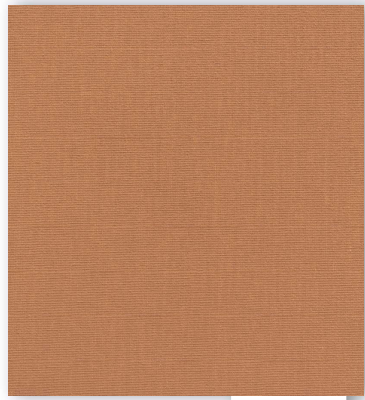
A344



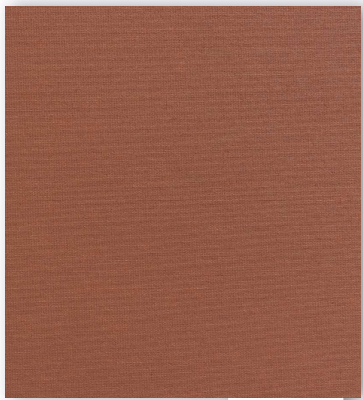
A345



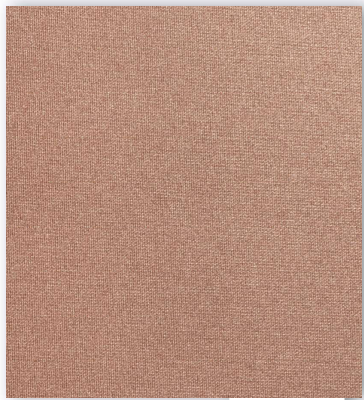
A342



A343



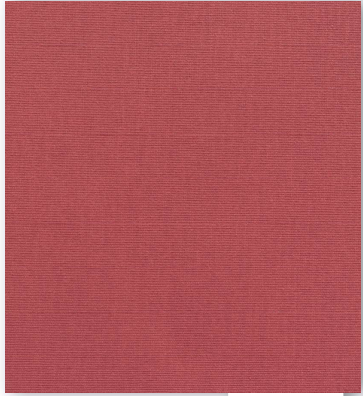
A341



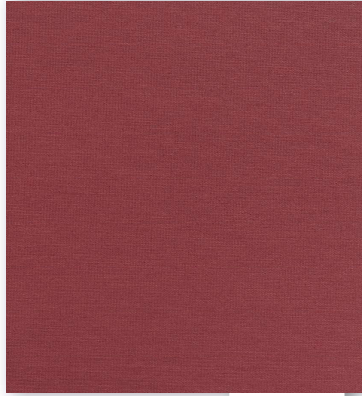
T143



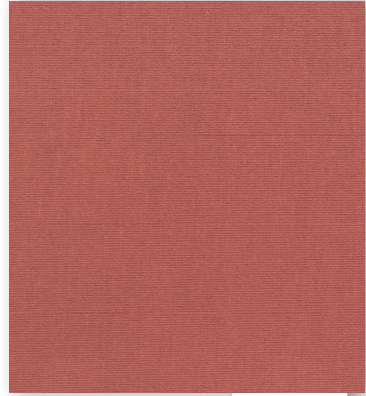
T238



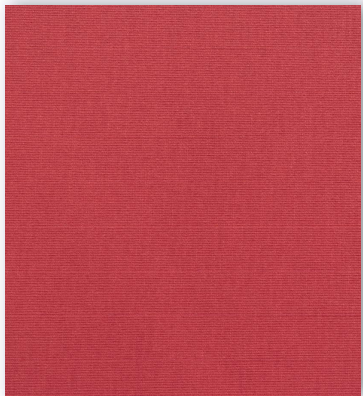
A348



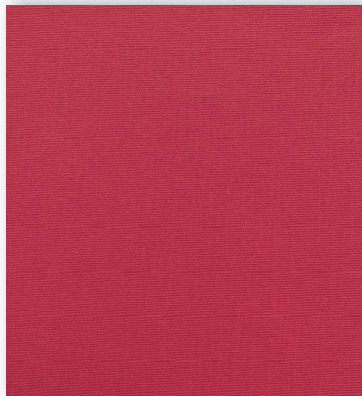
A349



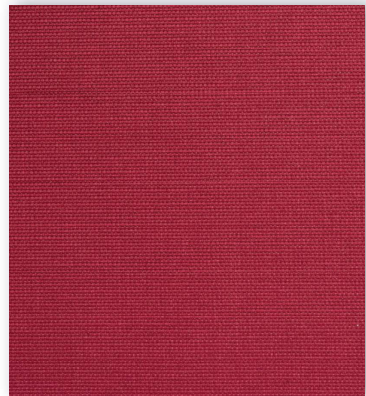
A346



A347



T109



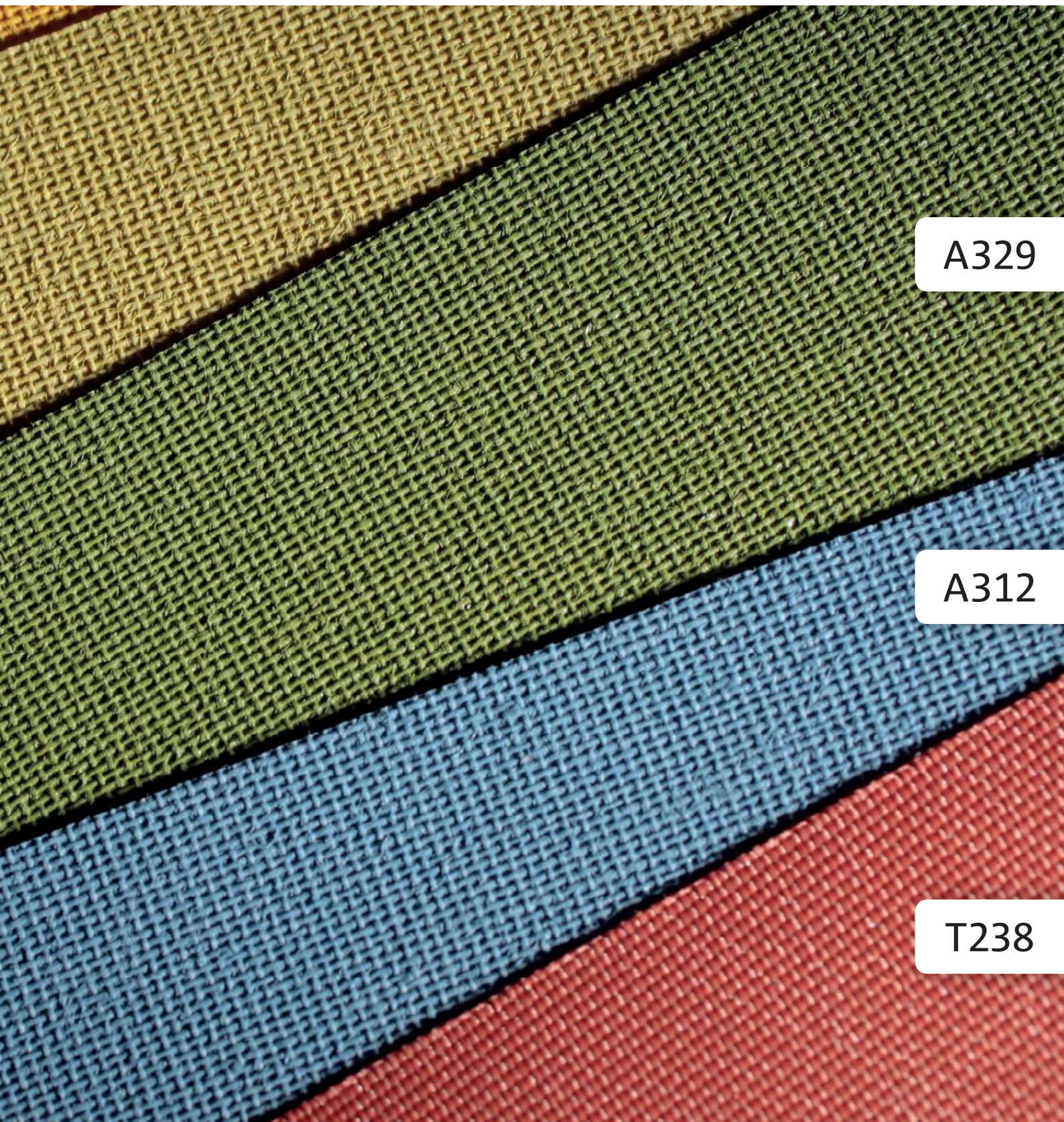
T184

transparent



A336

A331



A329

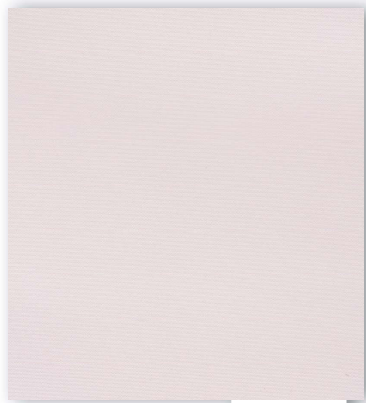
A312

T238

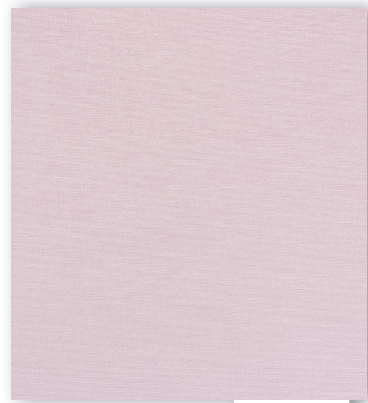
transparent



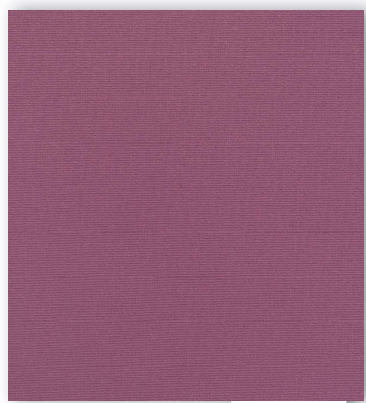
T183



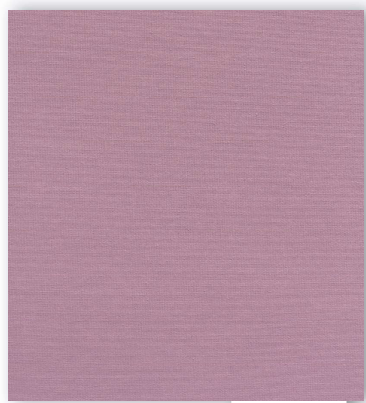
A365



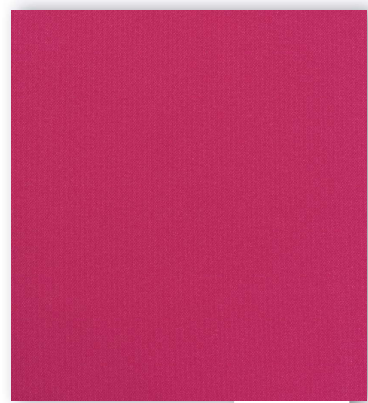
A350



A352



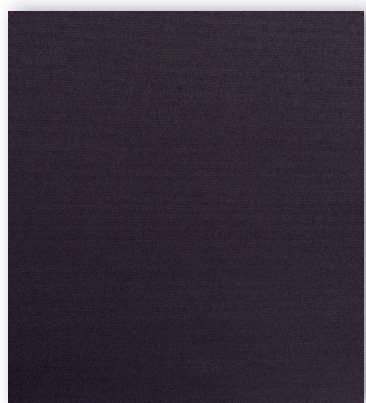
A351



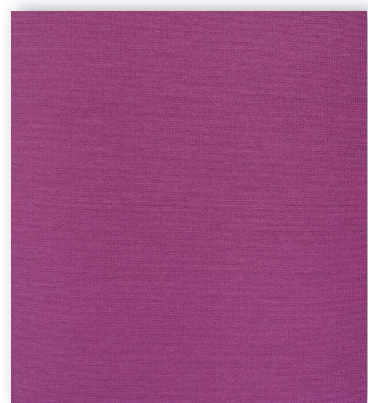
A366



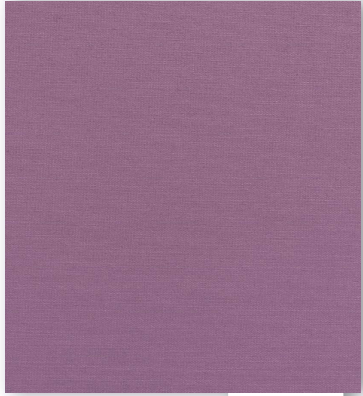
T166



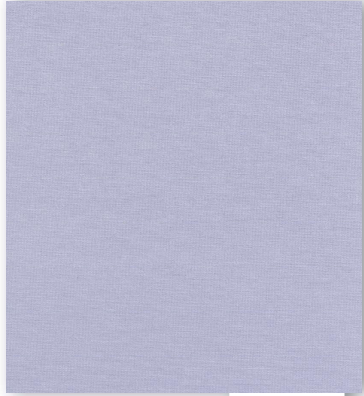
A367



A353



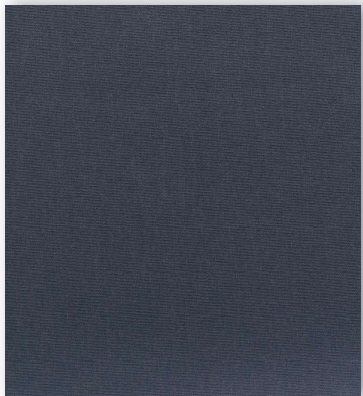
A316



A317



A356



A357

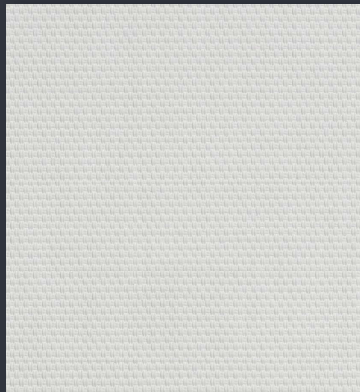
transparent



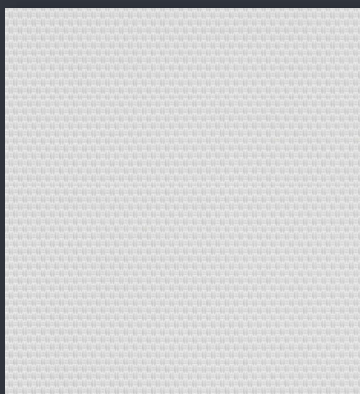
G105



G103



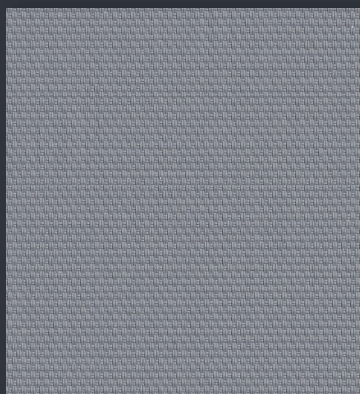
G102



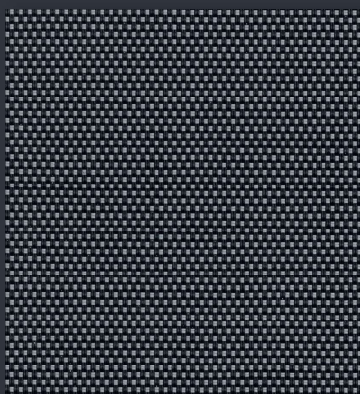
G101



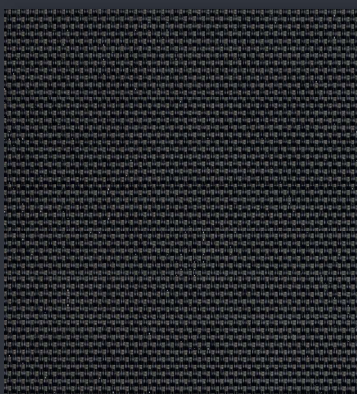
G104



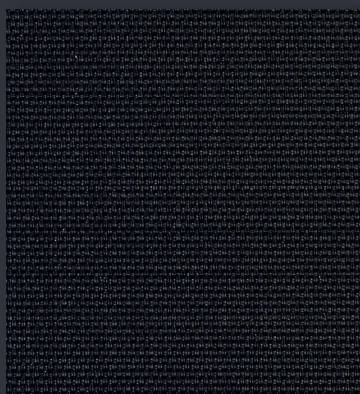
G106



G107



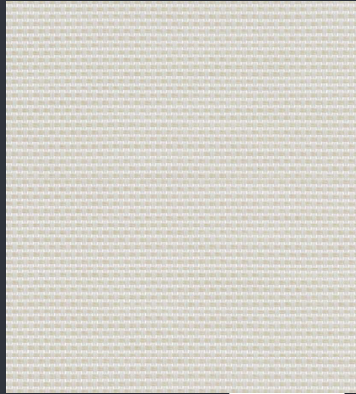
G109



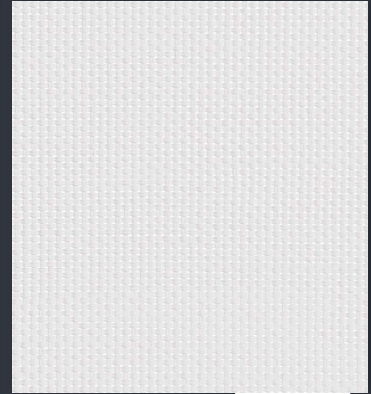
G108



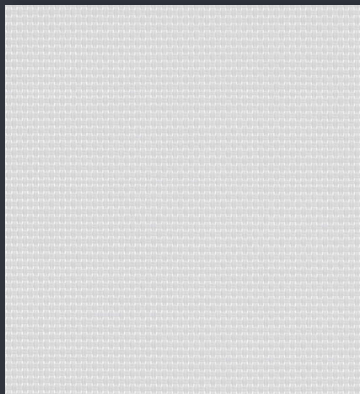
G305



G303



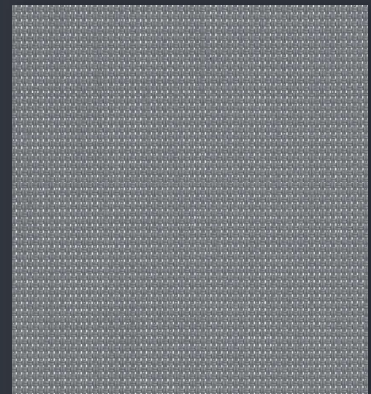
G302



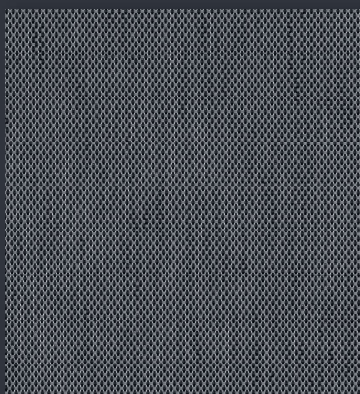
G301



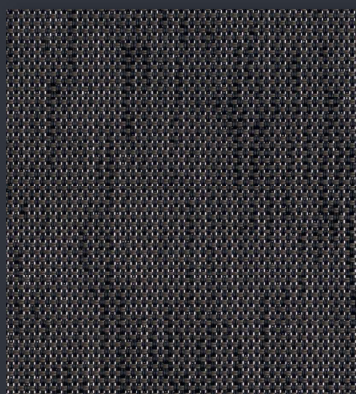
G304



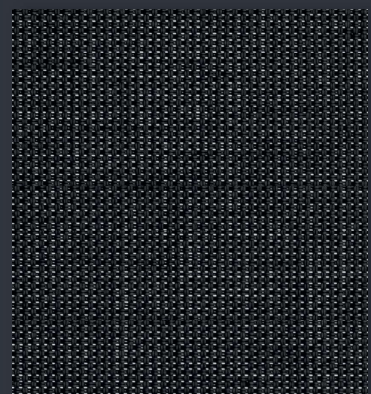
G306



G307



G309

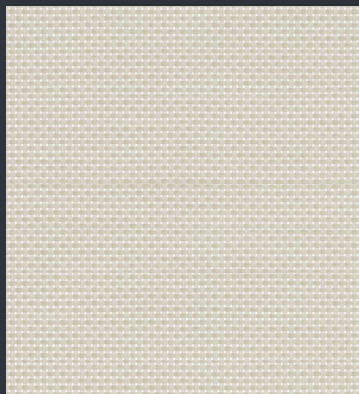


G308

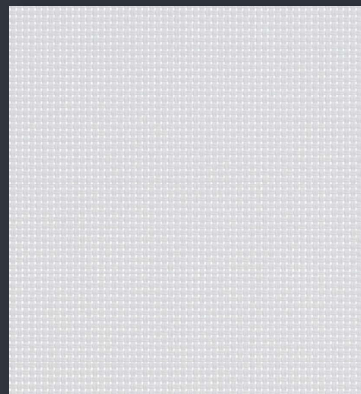
screen



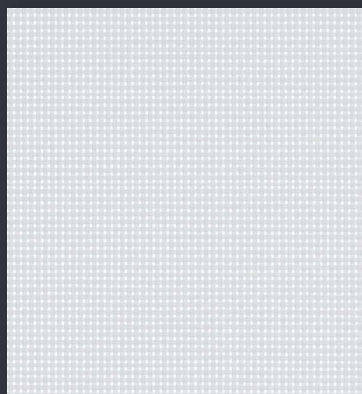
G505



G503



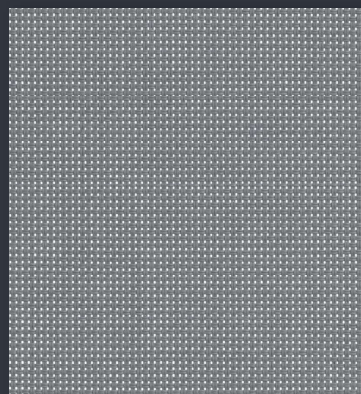
G502



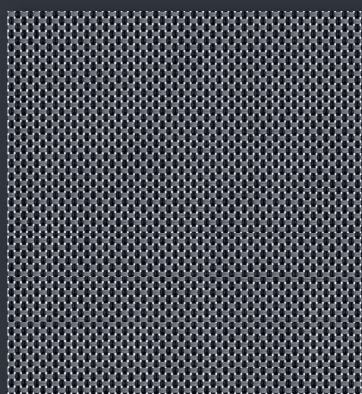
G501



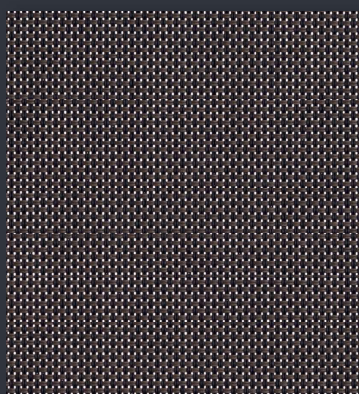
G504



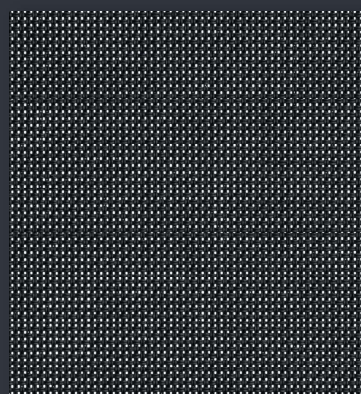
G506



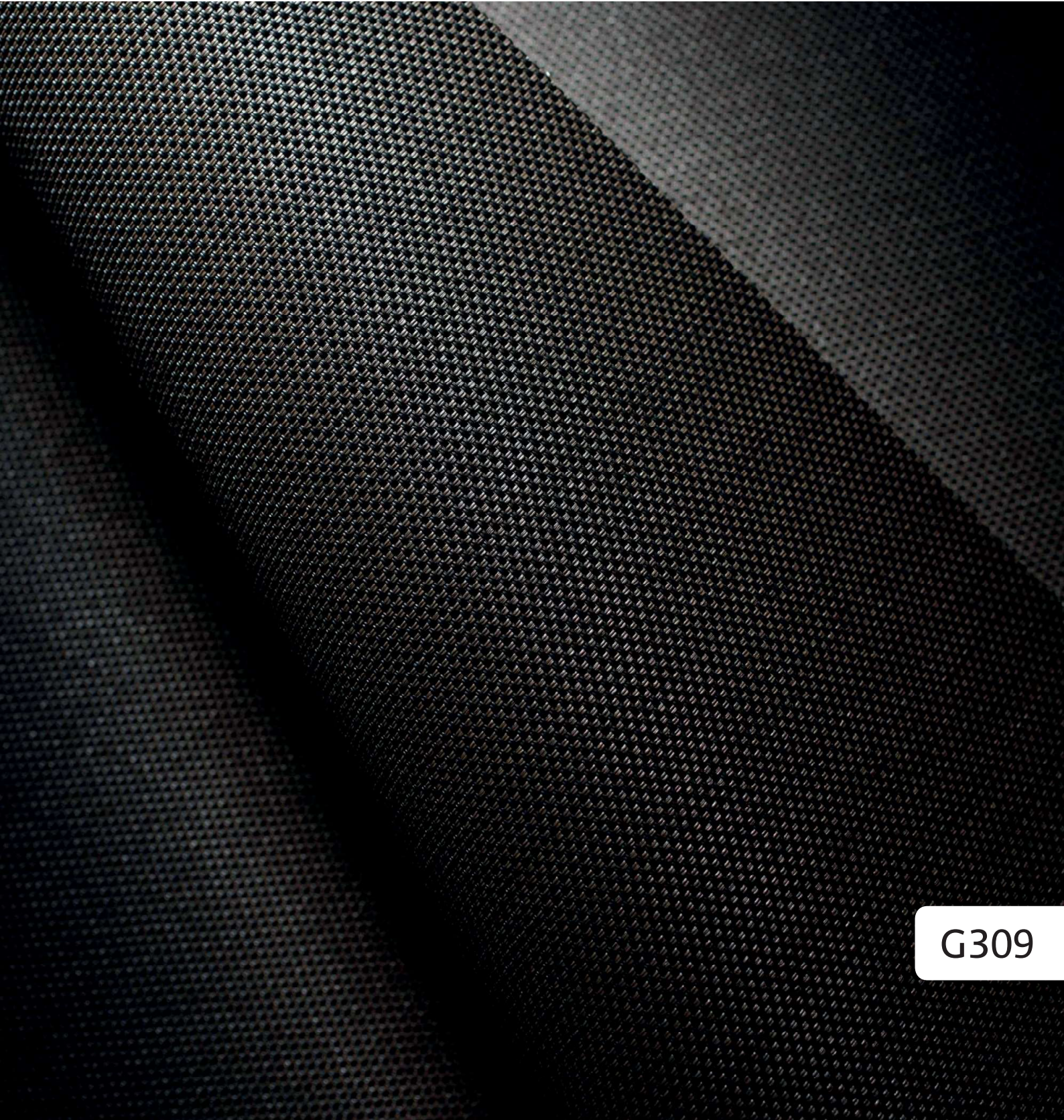
G507



G509

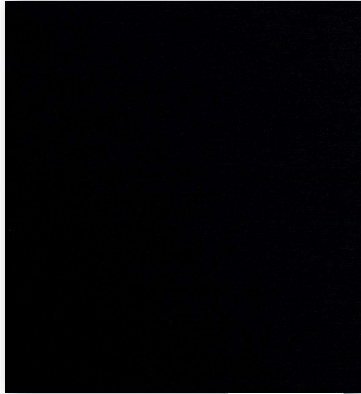


G508

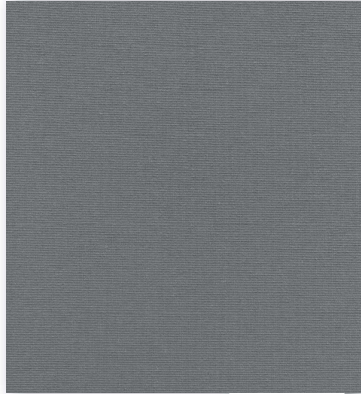


G309

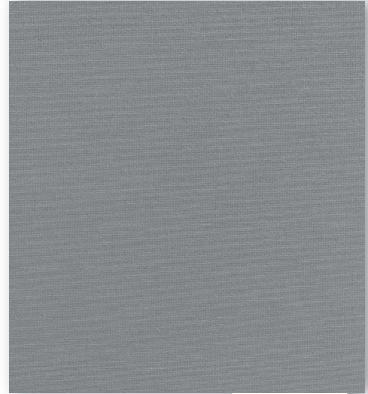
blackout



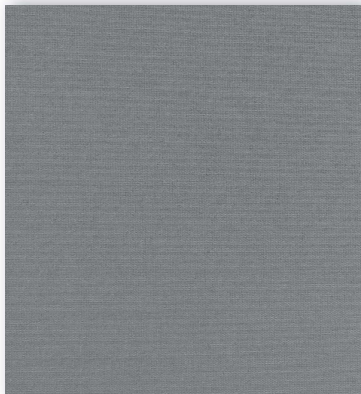
B808



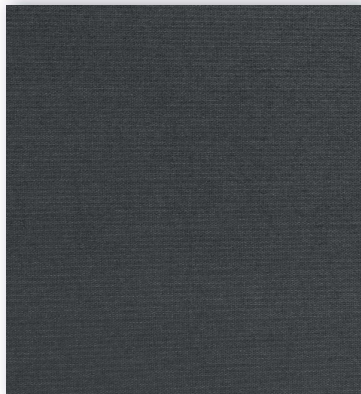
B609



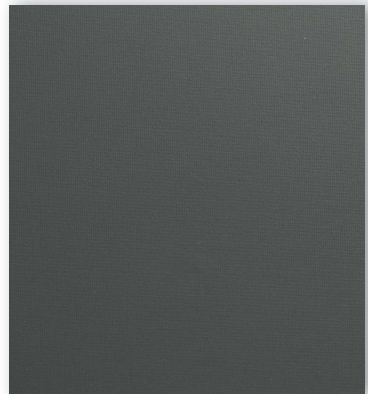
B665



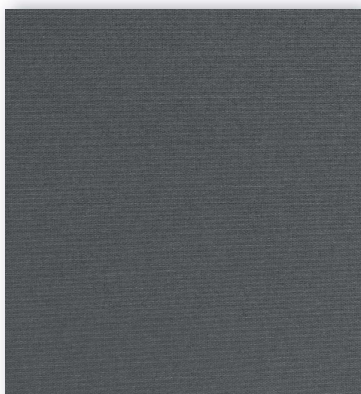
B807



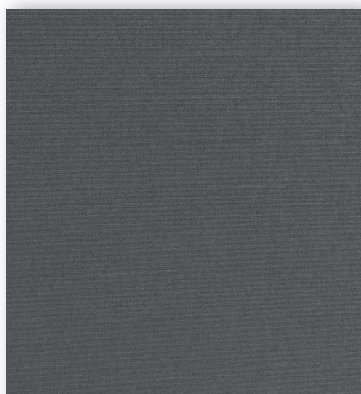
B640



B677



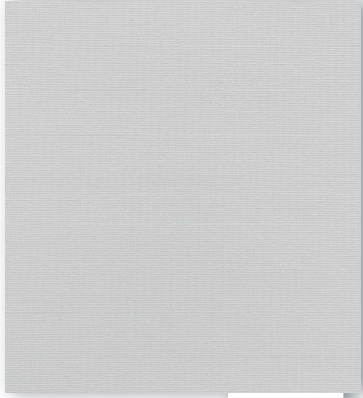
B639



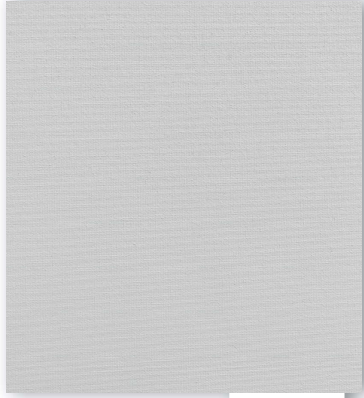
B682



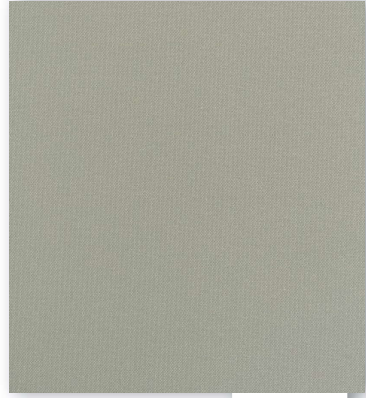
B610



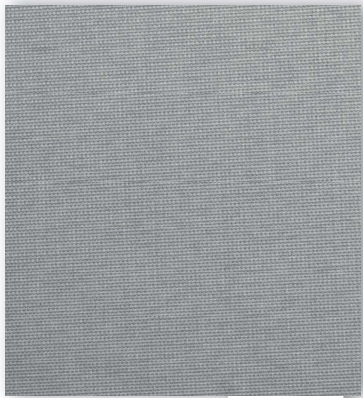
B664



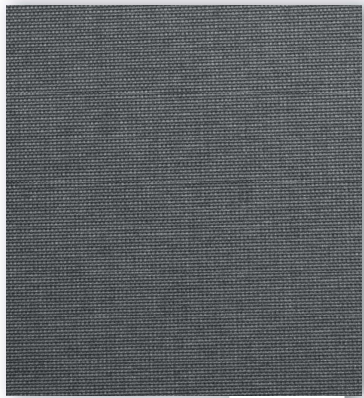
B806



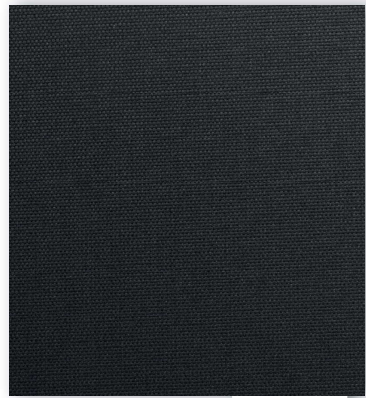
B672



Z083



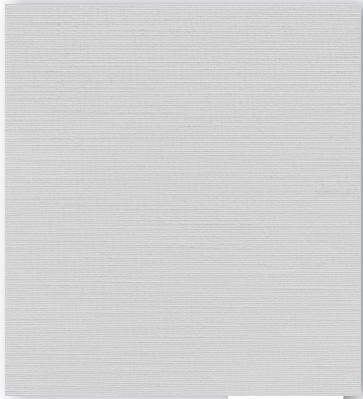
Z079



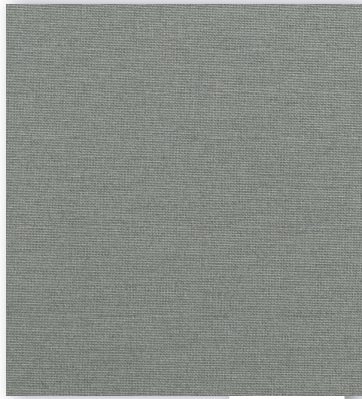
Z075

blackout

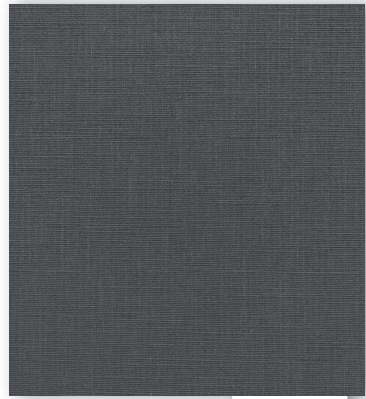
blackout



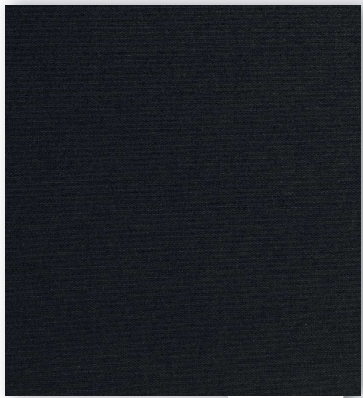
Z051



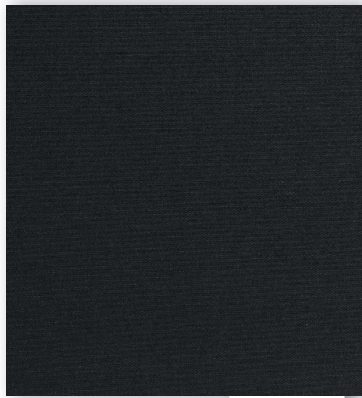
Z027



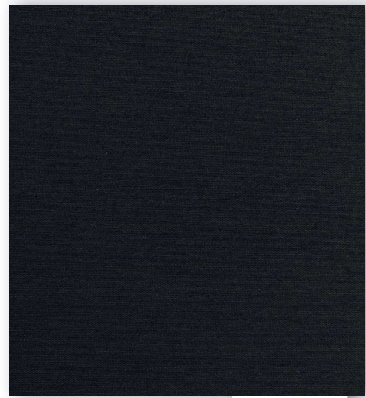
Z052



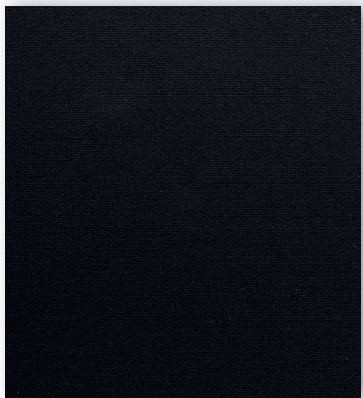
B638



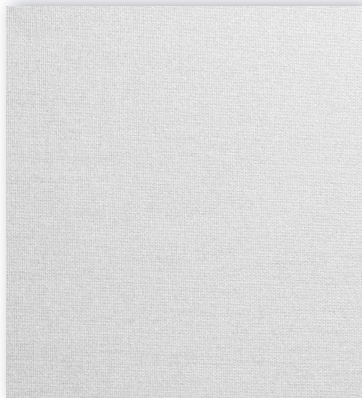
B681



B608



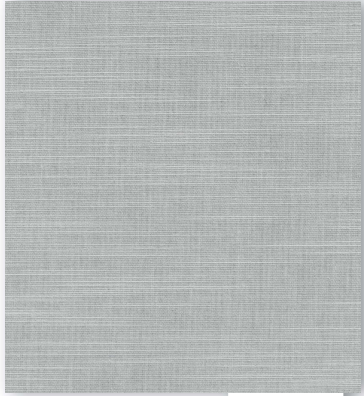
B666



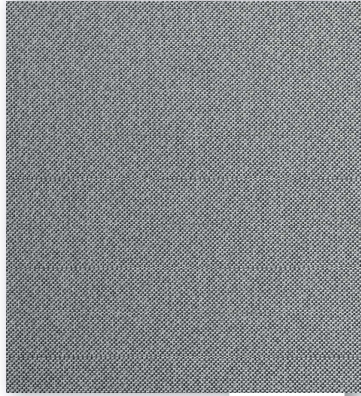
Z058



Z056



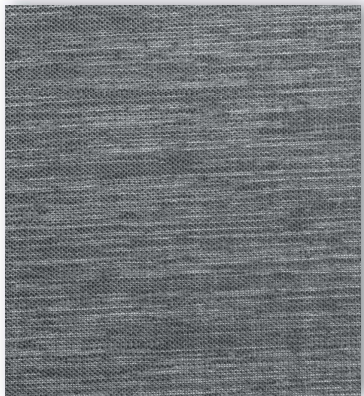
Z050



Z030



Z031



Z067



Z074

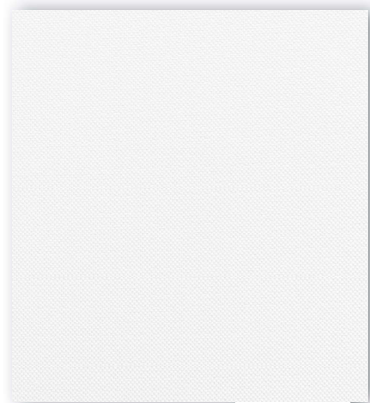
blackout

Z067

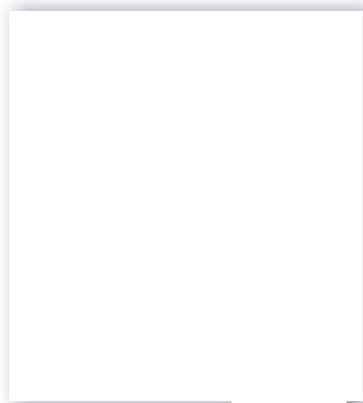




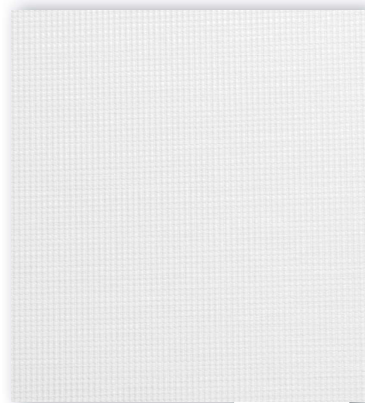
blackout



Z037



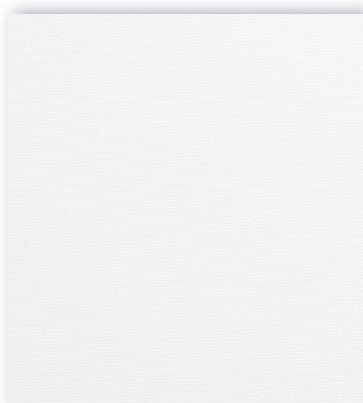
B600



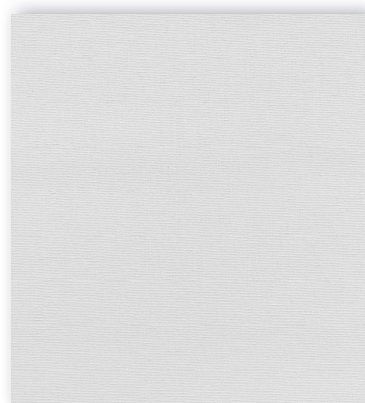
Z059



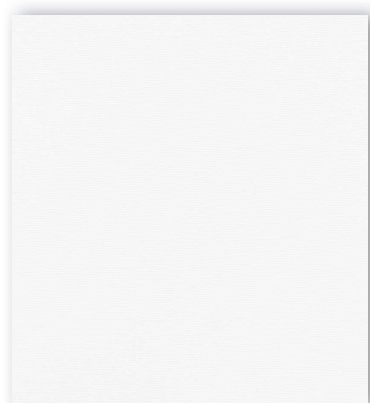
Z054



Z081



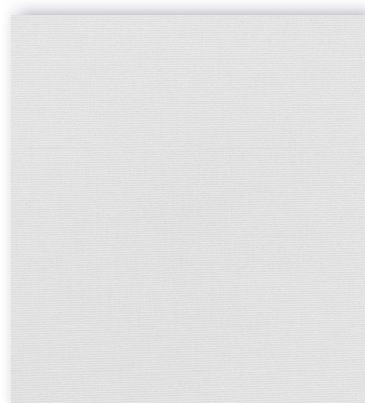
B602



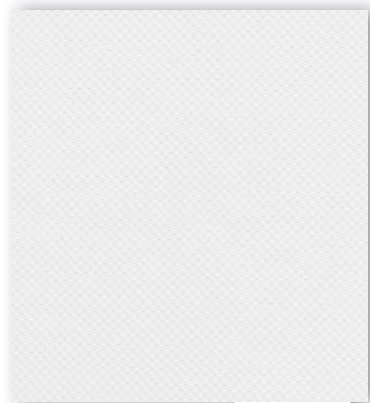
B601



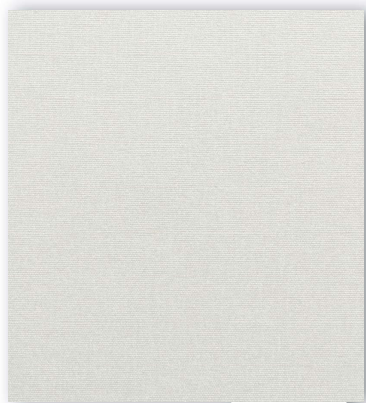
B680



B811



Z039



Z046



Z041

blackout

blackout



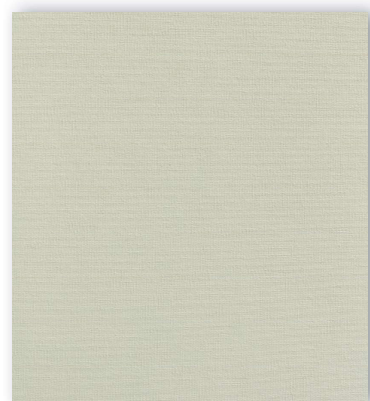
Z078



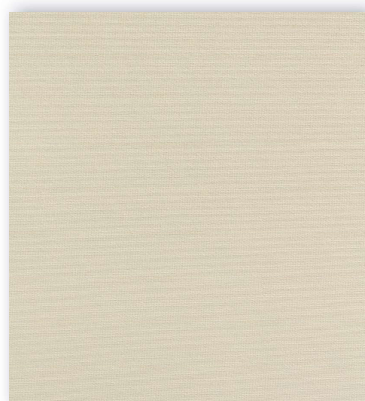
B603



B800



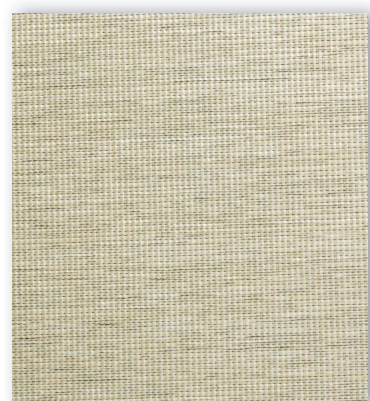
B605



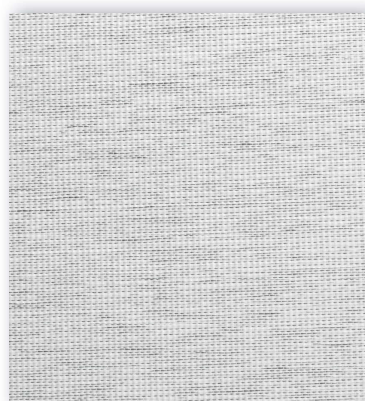
B651



Z042



Z060



Z061



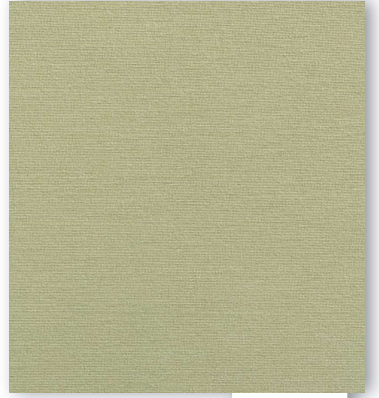
B604



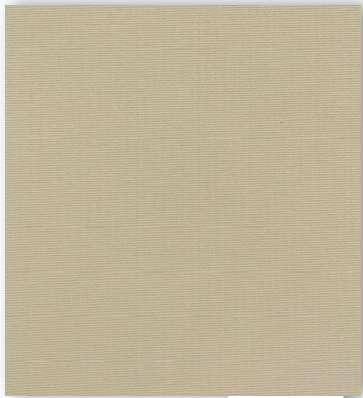
B801



B650



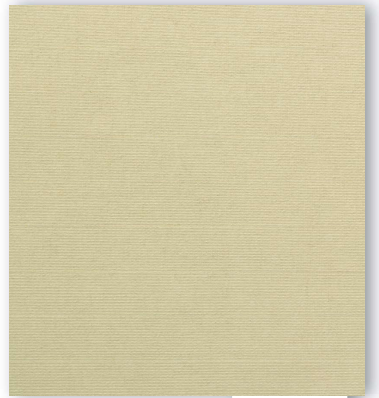
Z011



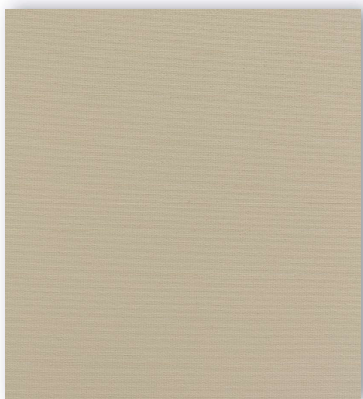
B652



Z076



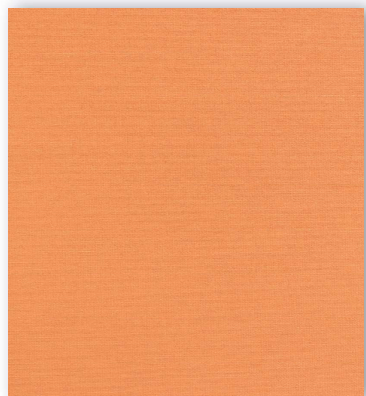
B606



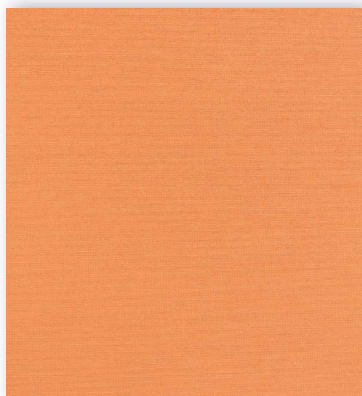
B804

blackout

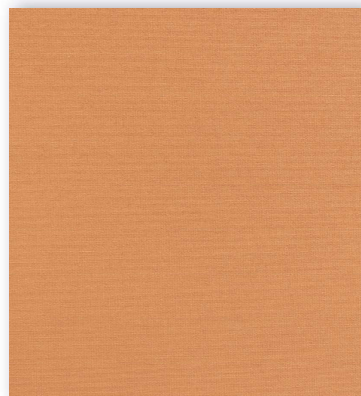
blackout



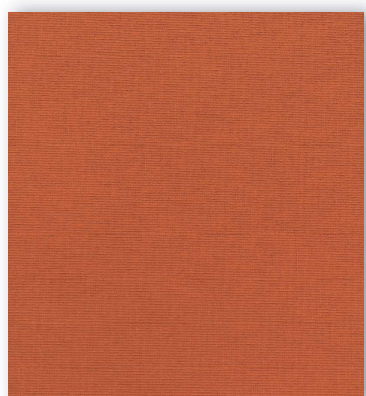
B622



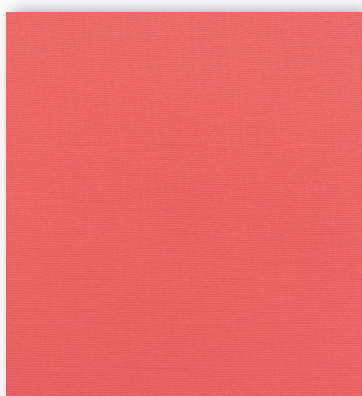
B657



B810



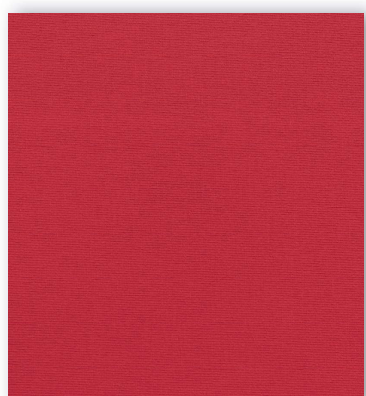
B623



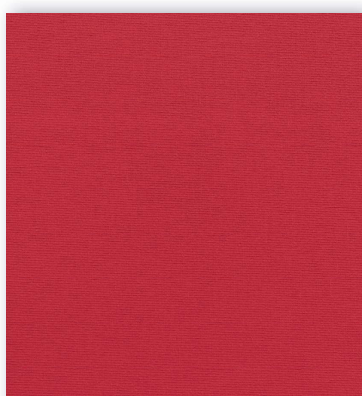
B656



B630



B809

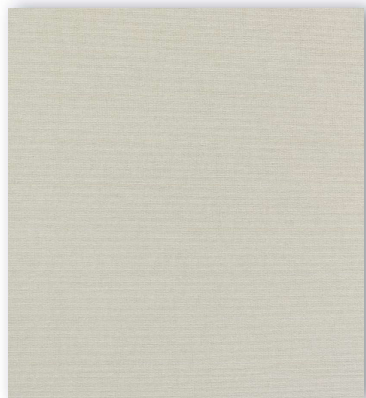


B678

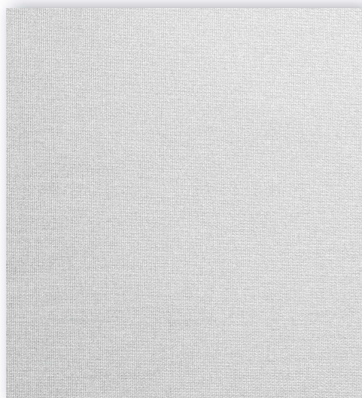


B655

blackout



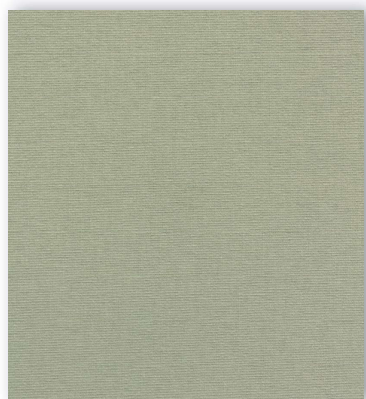
B629



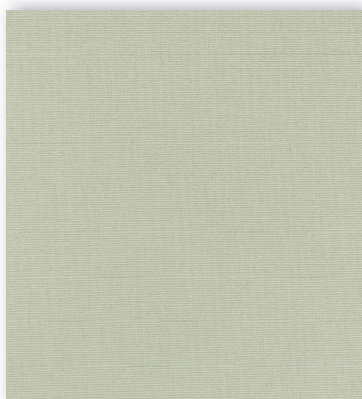
Z064



Z082



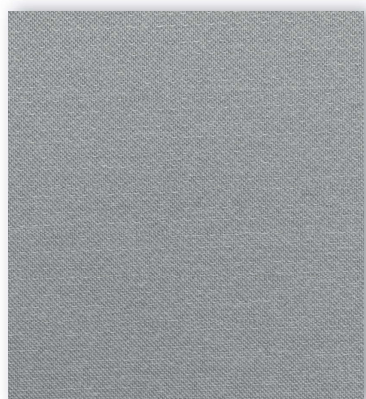
B626



B667



B802



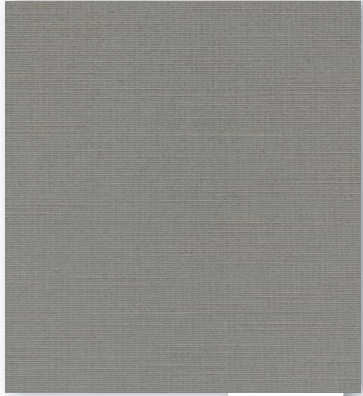
Z028



Z014



Z073



Z053



Z063



Z068



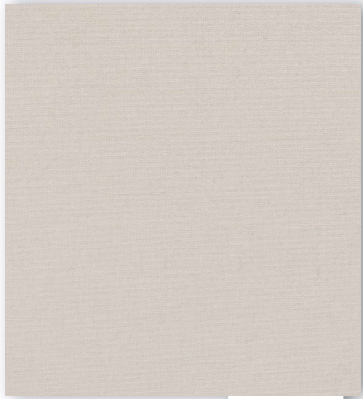
Z072

blackout

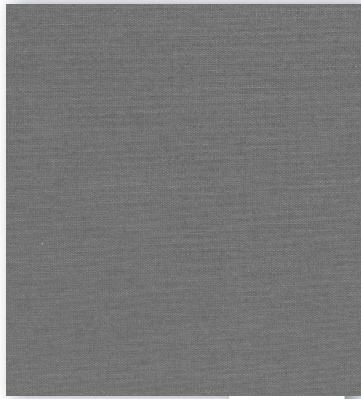
Z073



blackout



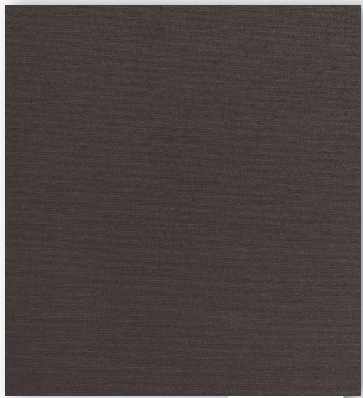
B637



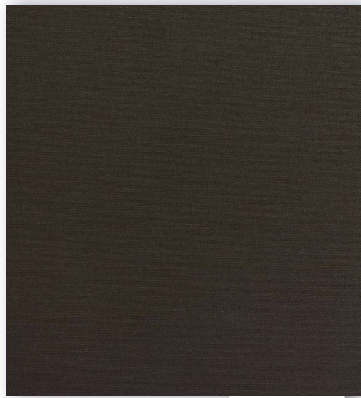
B633



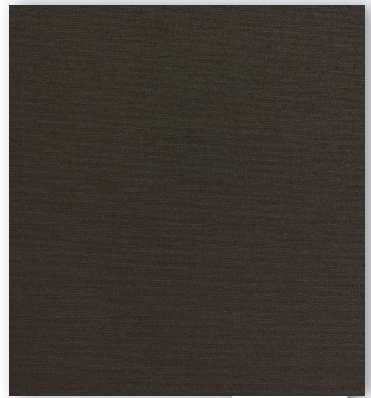
Z062



B625



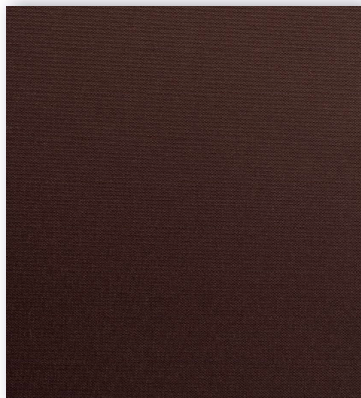
B654



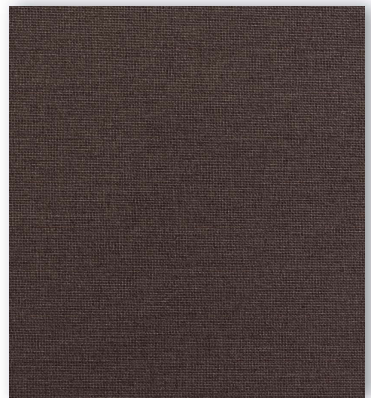
B805



Z069



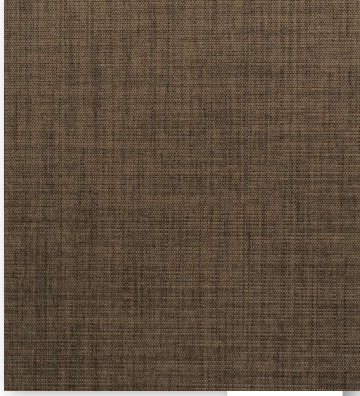
B676



Z022



Z077



Z084



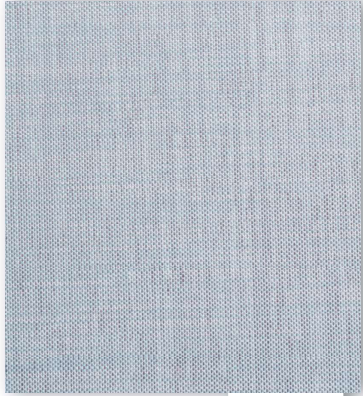
B653

blackout

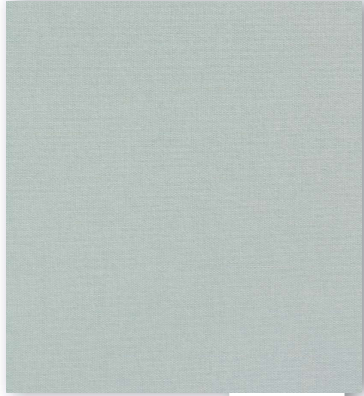
A close-up photograph of a dark blue denim fabric, showing the characteristic twill weave and some light-colored wear or creasing. A white rectangular label with rounded corners is positioned on the left side of the image, containing the text 'Z070' in a black, sans-serif font.

Z070

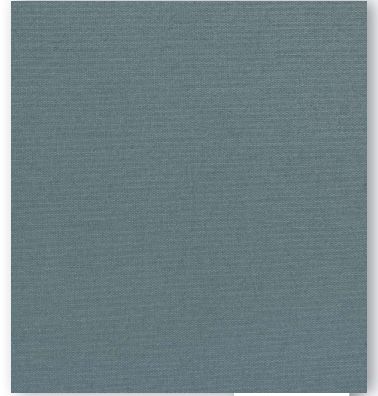




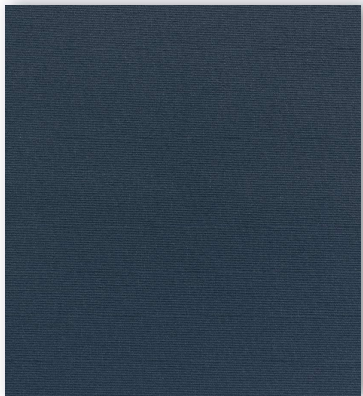
Z065



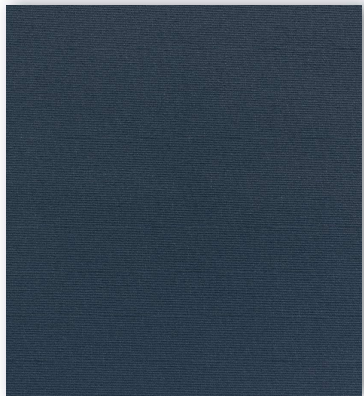
B636



B634



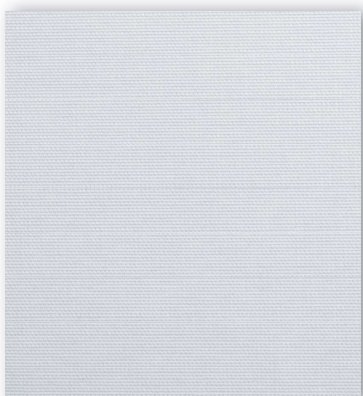
B614



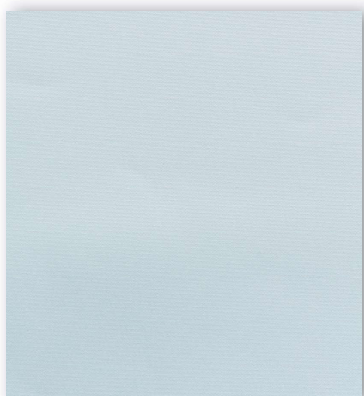
B662



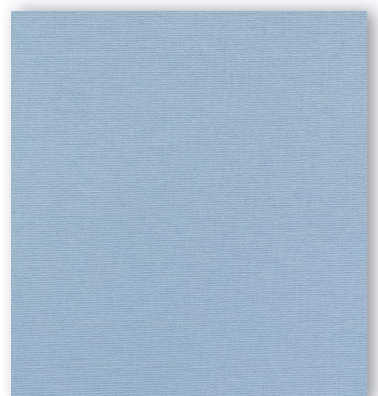
Z070



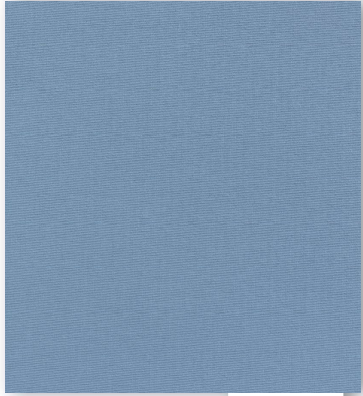
Z080



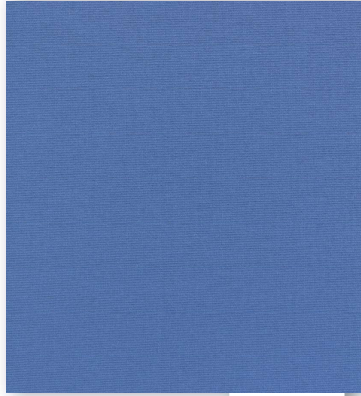
B671



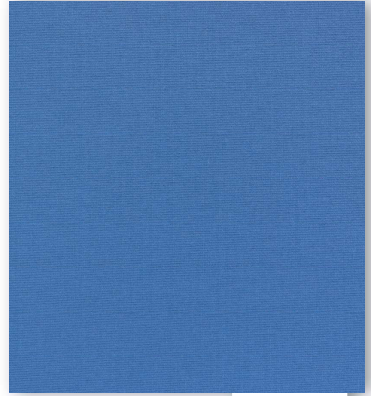
B611



B612



B613



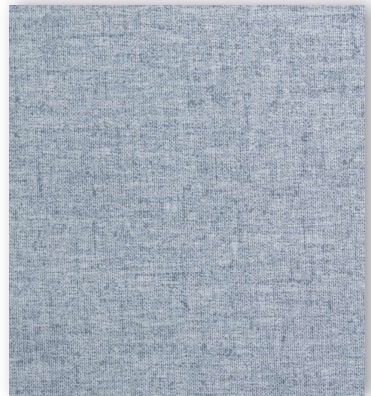
B663



B803



Z057



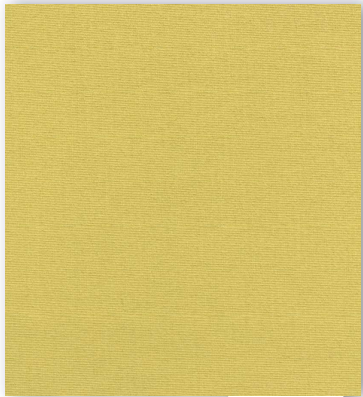
Z055



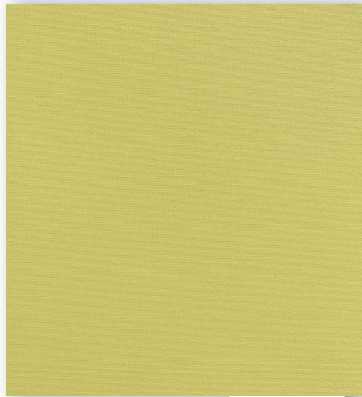


Z055

blackout



B620



B659



B619



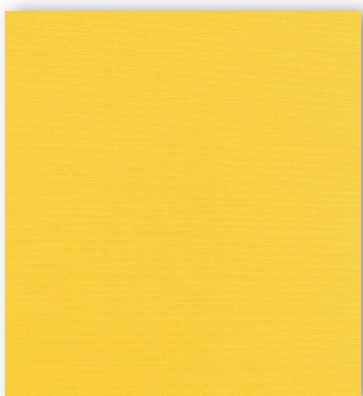
B814



B621



B658



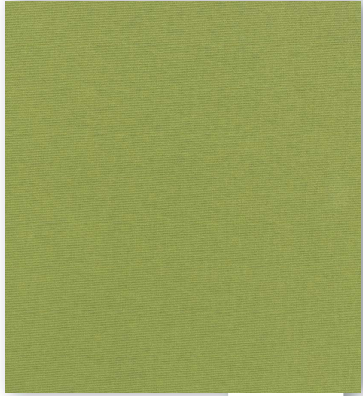
B631



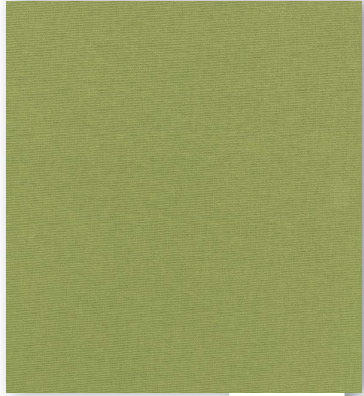
B812



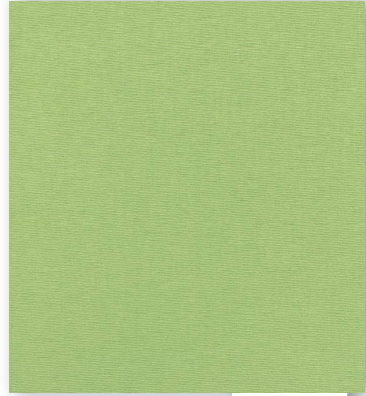
B617



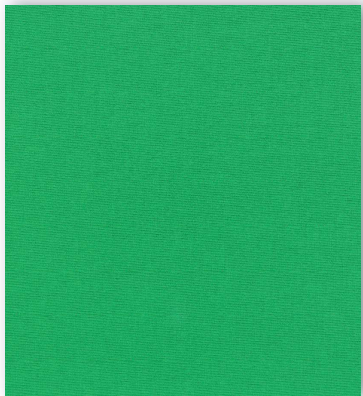
B660



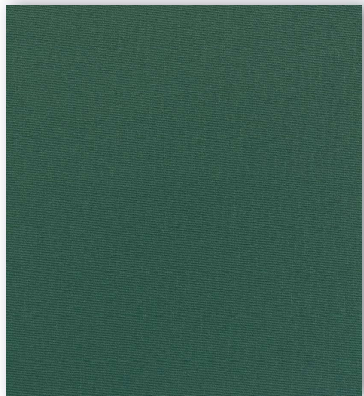
B813



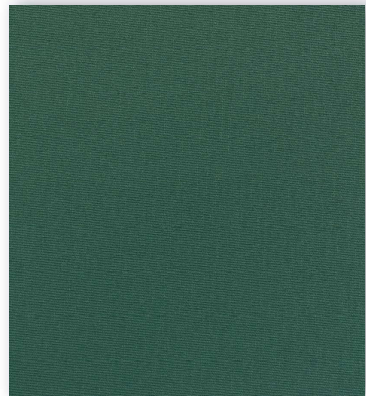
B618



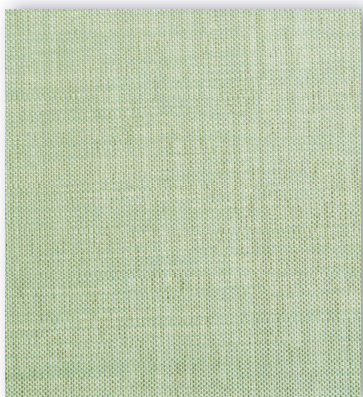
B632



B616



B661

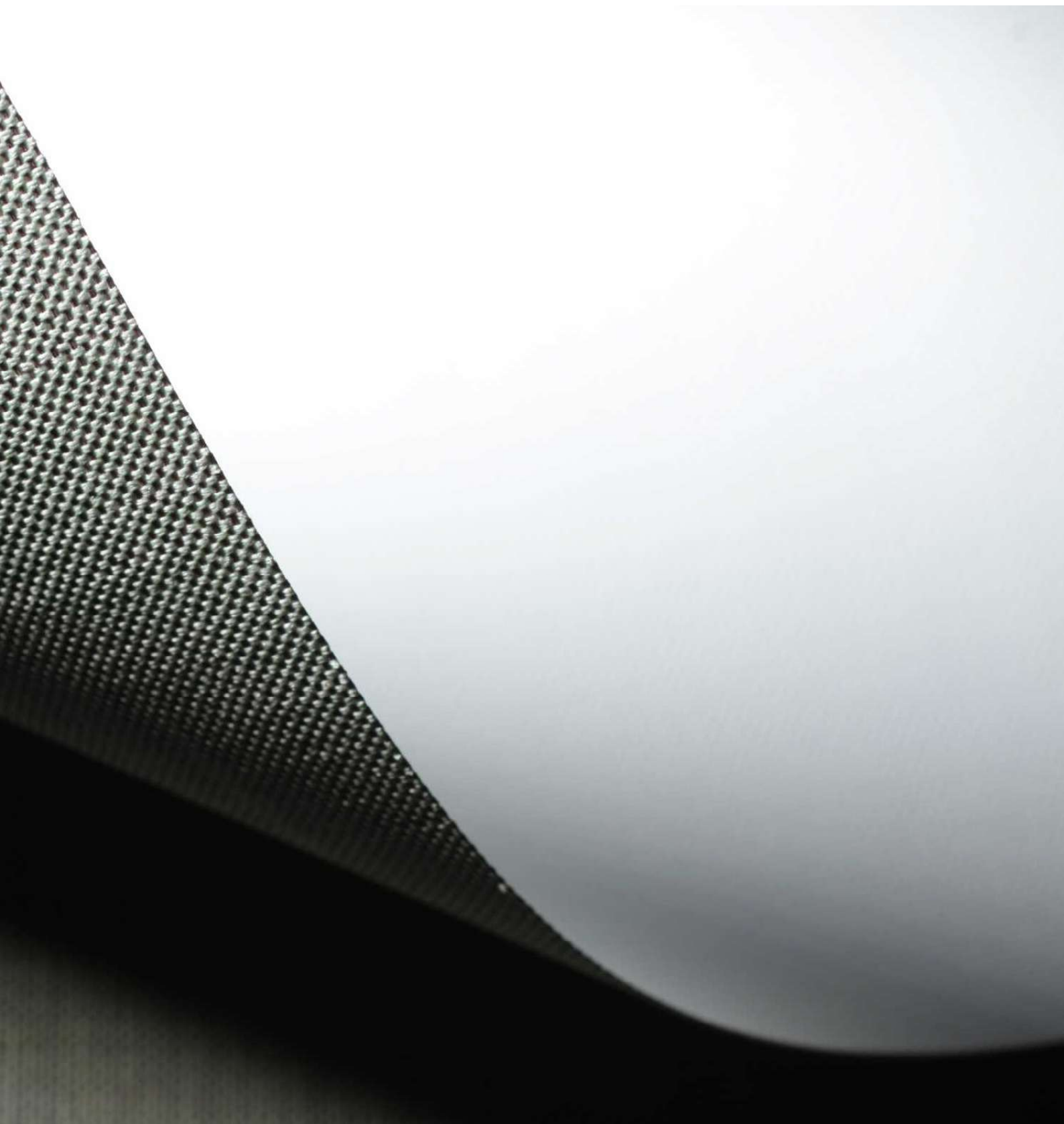


Z066

blackout



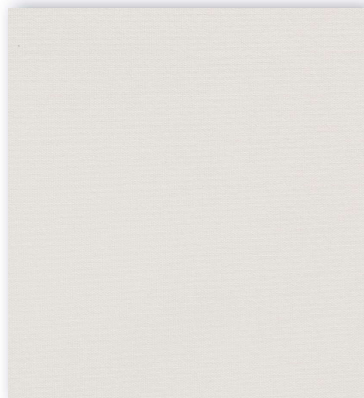
Z066



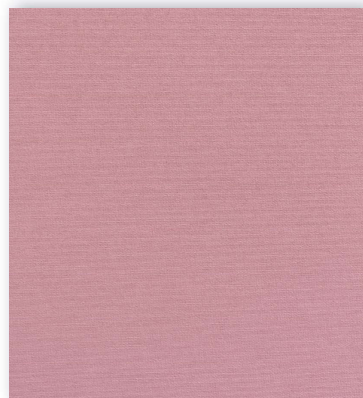
blackout



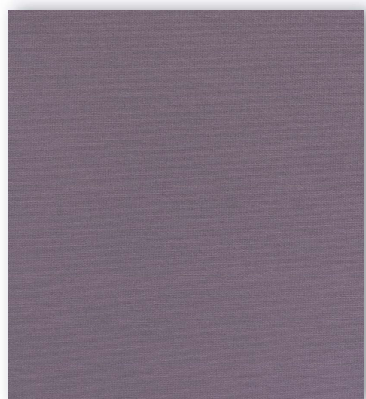
Z071



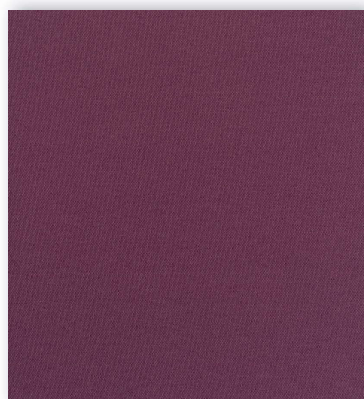
B635



B627



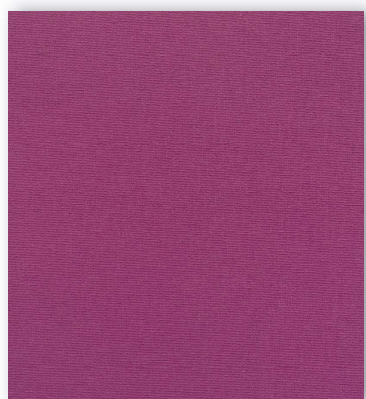
B668



B673



B669



B628

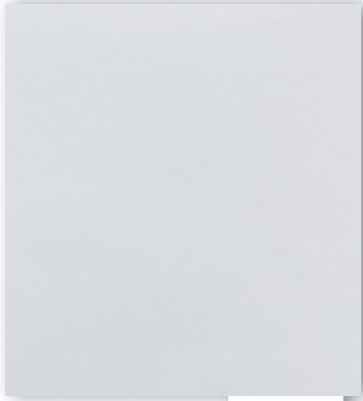


B670

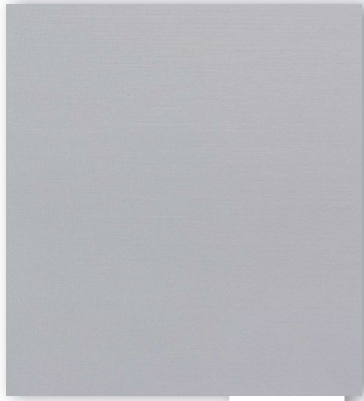
A close-up photograph of a fabric with a light-colored, possibly beige or cream, floral pattern. The pattern consists of stylized flowers and leaves. The fabric has a fine, woven texture. A dark, shadowed area is visible on the left side, suggesting the fabric is draped or folded. In the upper right corner, there is a small white rectangular label with the text 'Z071' in black.

Z071

sky window



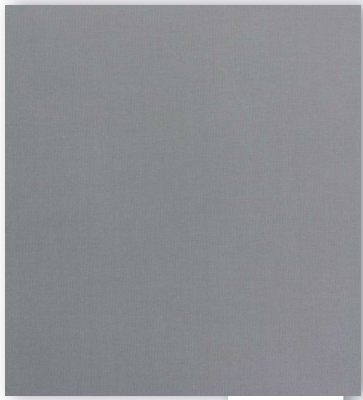
S001



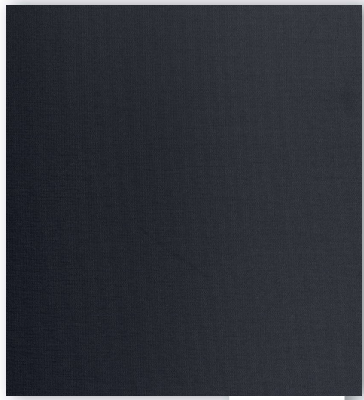
S037



S040



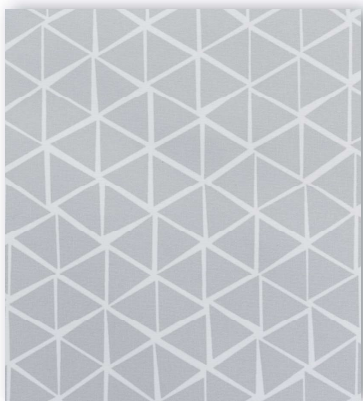
S029



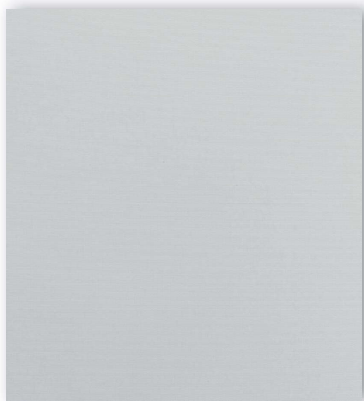
S007



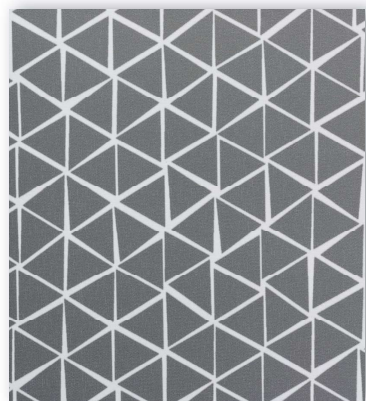
S041



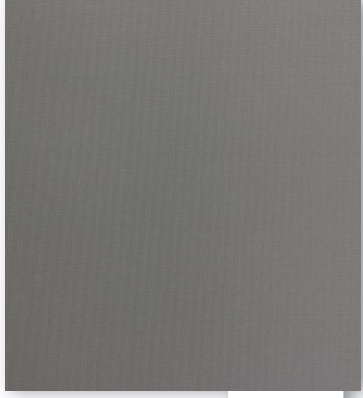
S035



S005



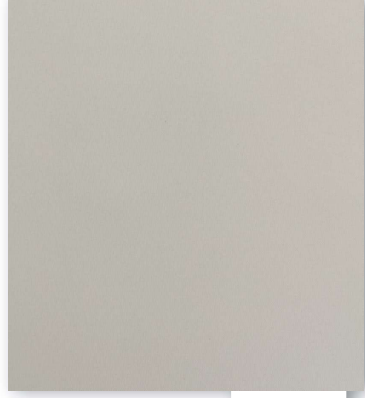
S034



S006



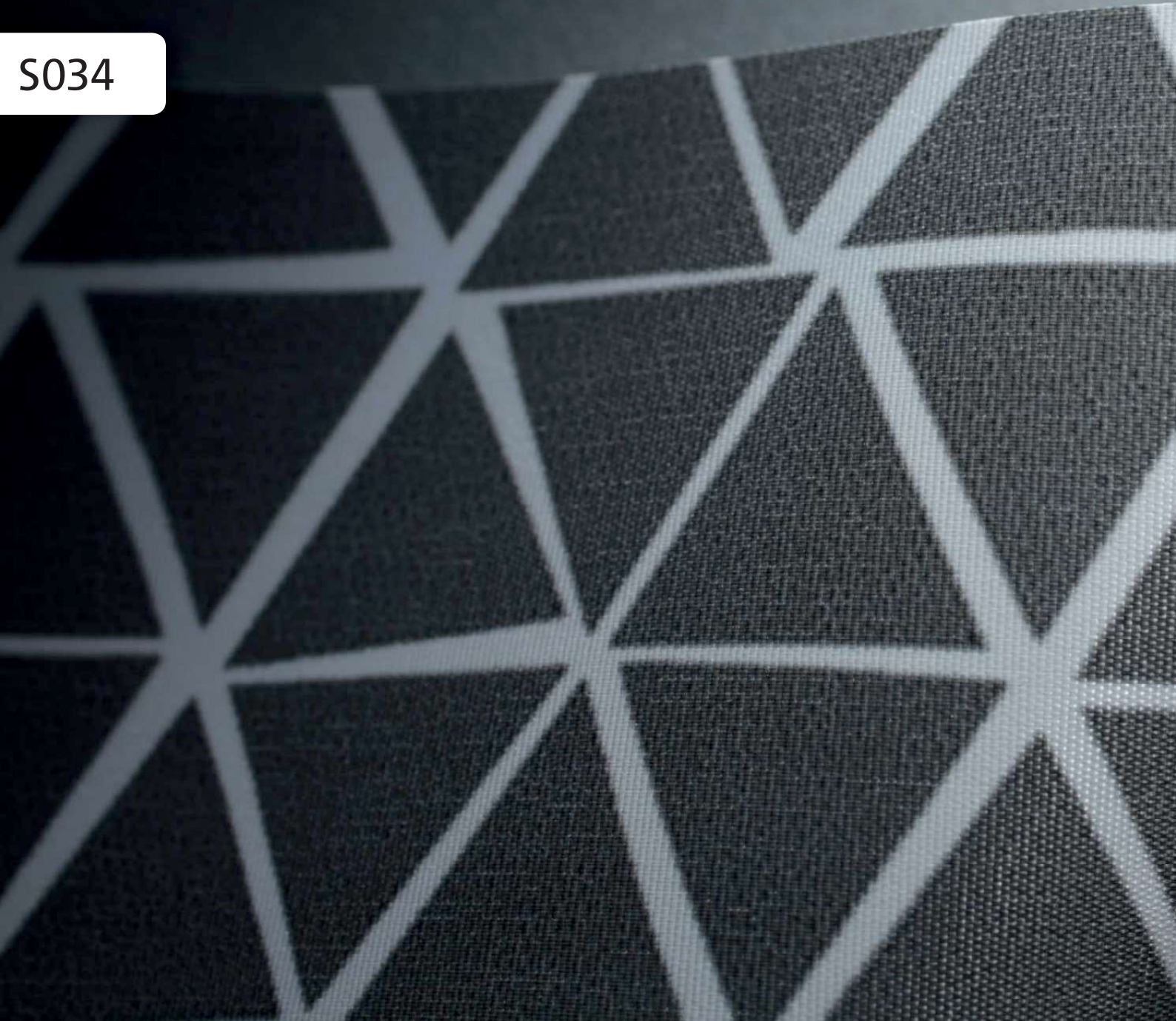
S033

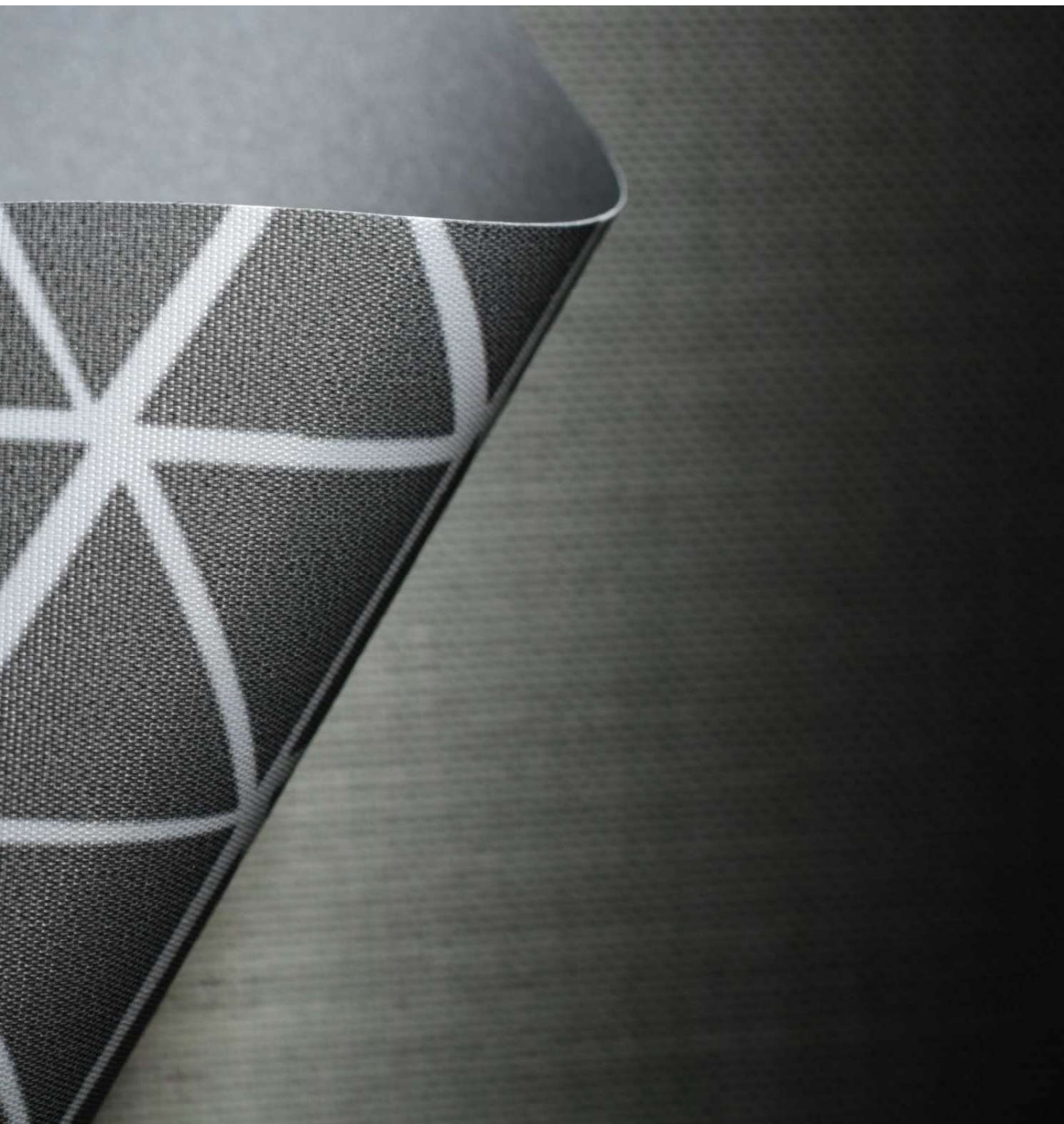


S032

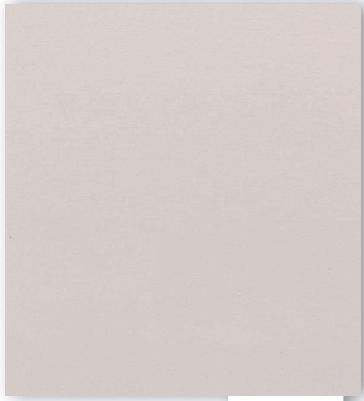
sky window

S034

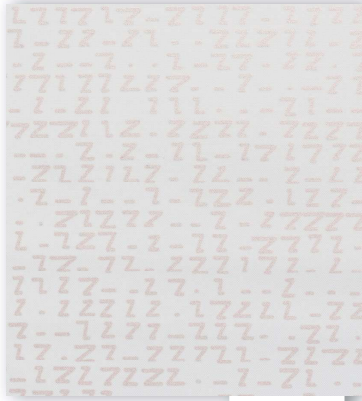




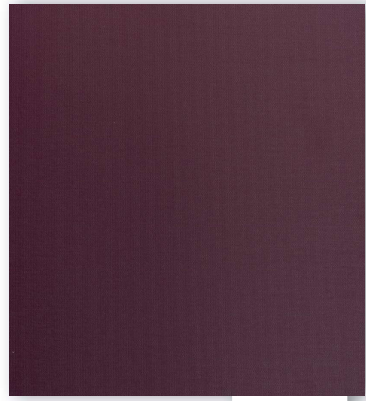
sky window



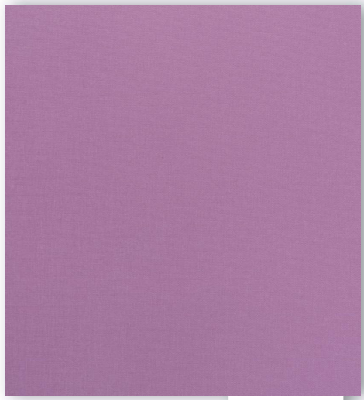
S038



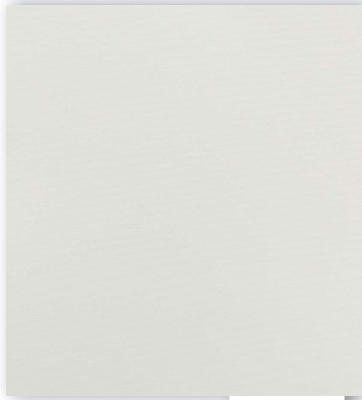
S039



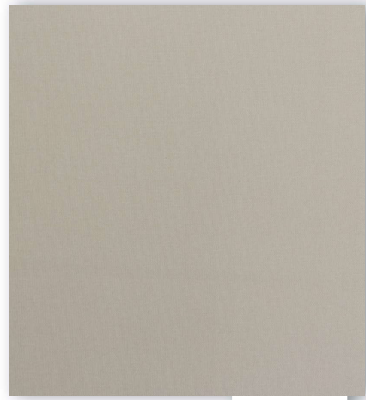
S014



S013



S002



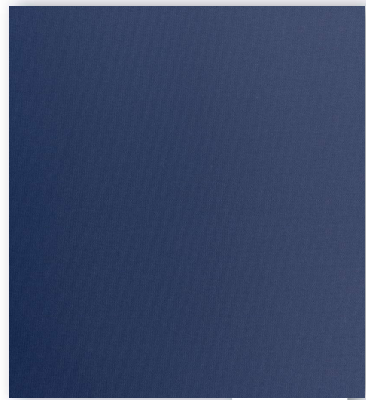
S004



S031



S036



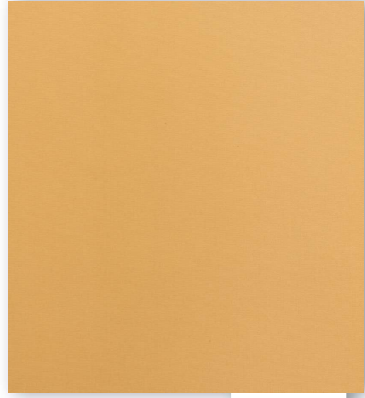
S012



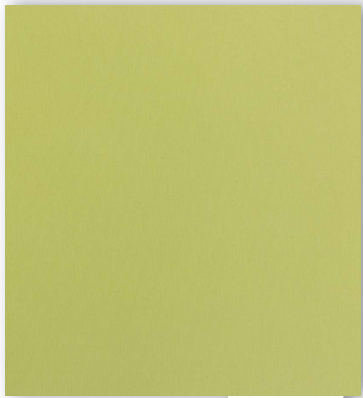
S003



S008



S009



S030

sky window

Stoffsymbol

A300










Preisgruppe

PG A/M

Transparenz



-  Einsatzmöglichkeit in den Fantazja/RM18-Systemen
-  Einsatzmöglichkeit im RM-System
-  Einsatzmöglichkeit im Fantazja Premium System
-  Einsatzmöglichkeit im Panel Track System
-  Max. Produktbreite
max 195 cm
-  Max. Produkthöhe
max 180 cm
-  Mögliche Stoffkombinationen
-  Reflexion - Prozentsatz des vom Stoff reflektierten Lichts
40 %
-  Absorption - Prozentsatz des vom Stoff absorbierten Lichts
9 %
-  Transmission - Prozentsatz des Lichts, das durch den Stoff strömt
51 %
-  Stoffbreite
200 cm

-  Stoffdicke
0,38 mm
-  Stoffgewicht
175 g/m²
-  Nassreinigung möglich
-  Kann unter Bedingungen mit erhöhter Luftfeuchtigkeit verwendet werden
-  mögliche Rotation des Stoffes
-  mögliche Rotation des Stoffes (Grafikwechsel)
-  Fc - Reduktionsfaktor der Wärmeenergie einer Fensterblende mit einem bestimmten Stoff.
Der Faktor wird auf einer Skala von 0 bis 1 bestimmt - wobei der niedrigere Wert eine bessere Reduzierung der Wärmeenergie bestimmt.
0,67
-  Reduzierung der Lichtintensität in Computerbildschirmen
N (Norden) - max. 20%
E (Osten) - max. 6%
S (Süden) - max. 5%
W (Westen) - max. 6%
-  Seriennummer des Stoffes
TV2



OEKO-TEX STANDARD 100

Der OEKO-TEX Standard 100 ist ein weltweites System zur Prüfung und Zertifizierung von Rohstoffen für die Herstellung von Textilien, Halbfabrikaten und Fertigprodukten in allen Produktionsstufen. Die Schadstoffprüfung umfasst das Erkennen und Prüfen von verbotenen Inhaltsstoffen.